

Initial Environmental Examination

March 2014

Kingdom of Cambodia: Greater Mekong Subregion
Tourism Infrastructure for Inclusive Growth Project

Kampot and Kep Provinces

Prepared by the Ministry of Tourism, Cambodia, for the Asian Development Bank.

CURRENCY EQUIVALENTS

(1 March 2013)

Currency Unit	–	Riel R
R1.00	=	\$0.00024
\$1.00	=	R4,050

ABBREVIATIONS

ABR	-	Anaerobic Baffle Reactor
ADB	-	Asian Development Bank
DAFF	-	Department of Agriculture, Forestry and Fisheries
DOE	-	Department of Environment
DPWT	-	Department of Public Works and Transport
DOT	-	Department of Tourism
DOWRAM	-	Department of Water Resources and Meteorology
EA	-	executing agency
EIA	-	environmental impact assessment
EMP	-	environment management plan
GMS	-	Greater Mekong Subregion
Government	-	Government of Cambodia
IEE	-	initial environment examination
IEIA	-	initial environmental impact assessment
MAFF	-	Ministry of Agriculture, Forestry and Fisheries
MOE	-	Ministry of Environment
MIME	-	Ministry of Industry, Mines and Energy
MPWT	-	Ministry of Public Works and Transport
MOT	-	Ministry of Tourism
MOWRAM	-	Ministry of Water Resources and Meteorology
PAM	-	Project administration manual
PISC	-	Project implementation and supervision consultant
PIU	-	Project implementation unit
PPCC	-	provincial project coordination committee
PPTA	-	Project preparatory technical assistance
PPMU	-	provincial project management unit
REA	-	rapid environmental assessment
RP	-	resettlement plan
GRC	-	Royal Government of Cambodia
SPS	-	safeguard policy statement (2009)
WWTP	-	wastewater treatment plant

WEIGHTS AND MEASURES

km	-	kilometer
kg	-	kilogram
ha	-	hectare

In this report, "\$" refers to US dollars.

This initial environmental examination is a document of the borrower. The views expressed herein do not necessarily represent those of ADB's Board of Directors, Management, or staff, and may be preliminary in nature. Your attention is directed to the "terms of use" section of this website.

In preparing any country program or strategy, financing any project, or by making any designation of or reference to a particular territory or geographic area in this document, the Asian Development Bank does not intend to make any judgments as to the legal or other status of any territory or area.

Draft

TABLE OF CONTENTS

EXECUTIVE SUMMARY	I
I. INTRODUCTION	1
A. Background to IEE	1
B. Assessment Context	2
1. Impact Footprints	3
II. POLICY, LEGAL, AND ADMINISTRATIVE FRAMEWORK	3
A. Environmental Impact Assessment	3
B. Legal and Policy Framework for Environmental Protection	4
C. Agencies Responsible for Coastal Zone Management and Assessment	5
1. Inland Waterways and Maritime Ports Authority	5
D. ADB Safeguard Policy	6
III. DESCRIPTION OF CAMBODIA SUBPROJECTS	7
A. Output 1: Last Mile Tourism Access Infrastructure Improved	7
1. Kampot Pier Development	7
B. Output 2: Environmental Services at Border Tourism Centers Improved	9
1. Kep Crab Market Environmental Improvements	9
IV. DESCRIPTION OF AFFECTED ENVIRONMENTS	13
A. General Country Environmental Profile	13
1. Climate	13
2. Soils	14
3. Forest Areas	14
B. Kampot and Kep Subproject Areas	15
1. Bio-physical Features	15
2. Protected Areas	17
3. Marine Coastal Zone of Kampot and Kep	18
4. Land Use at Subproject Sites	21
5. Quality and reliability of information and data	24
V. PUBLIC CONSULTATION	24
A. Identification of Stakeholders	24
B. Discussion Guide	25
C. Summary of Public Consultation	26
VI. POTENTIAL ENVIRONMENTAL IMPACTS AND MITIGATIONS	29
A. Subproject Benefits	29
1. Passenger Pier and Facilities	29
2. Crab Market Environmental Improvements	29
B. Subproject Impacts and Mitigations	29
1. Pre-construction Phase	30
2. Construction Phase	30
3. Operation Phase	34
4. Induced and Cumulative Impacts	38
5. Climate Change	39
VII. ANALYSIS OF ALTERNATIVES	39
A. Siting of Passenger Pier in Kampot	40
1. Phnom Dong Headland	41
2. Teuk Chuu River	41
B. Wastewater Treatment Technology for Crab Market	42

1.	Lagoon-based WWTP – East of Kep	42
2.	Lagoon-based WWTP near Crab Market	42
3.	High Pressure Treatment Plant at Crab Market	43
4.	ABR Septic System at Crab Market	43
VIII.	INFORMATION DISCLOSURE AND GRIEVANCE REDRESS MECHANISM	43
IX.	ENVIRONMENTAL MANAGEMENT PLANS	45
X.	CONCLUSIONS AND RECOMMENDATION	45
XI.	REFERENCES CITED	46
	APPENDIX A. ENVIRONMENTAL STANDARDS FOR CAMBODIA	48
	APPENDIX B: MANGROVE RESTORATION WITH CWDC CAMBODIA	52
	Figure 1: Project Provinces in Cambodia	2
	Figure 2: Passenger pier site and access road (red) from highway to Kampot town (left).....	8
	Figure 3: Plan View of Passenger Pier on Teuk Chuu River South of Kampot Town.....	9
	Figure 4: Plan view of existing seaside crab market in Kep.....	11
	Figure 5: Location of all subprojects in Kampot and Kep, Cambodia.....	13
	Figure 6: Soil Types of Cambodia	14
	Figure 7: Forest Types of Cambodia	15
	Figure 8: Water quality sampling sites in Kampot Bay and near Kep	17
	Figure 9: Location of Bokor and Kep National Parks near Subprojects.	18
	Figure 10. Important Bird areas in National Parks North of Kampot and Kep Towns.....	18
	Figure 11: Coral Reefs and Seagrass in Coastal Zone of Kampot.....	19
	Figure 12: Seagrass Beds and Coral areas of Kep. Note Dugong Migration Route.....	20
	Figure 13: Boat Channel (blue) and Seagrass and Mangrove areas (green).....	22
	Figure 14: Passenger pier site on east bank of Teuk Chuu River and access road.	22
	Figure 15: Crab market and adjacent shoreline road.....	23
	Figure 16: Alternate Sites of Kampot Passenger Pier and Wastewater Treatment in Kep	40
	Table 1: Summary of Output 1 and 2 Activities in Kampot and Kep.....	2
	Table 2: Components of New Passenger Pier at Kampot.....	8
	Table 3: Summary of Components of Environmental Improvements to Crab Market.....	10
	Table 4: Rivers Discharging to Kampot Bay near the Subproject Area.....	16
	Table 5: Dry-season River and Coastal Water Quality 2005 - 2006	16
	Table 6: Guiding Questions and Information Requests for Stakeholder Consultations	25
	Table 7: Example Environmental Components Used to Guide Stakeholder Discussions.	26
	Table 8: Summary of Stakeholder Views of the Passenger Pier Development in Kampot	26
	Table 9: Stakeholder Views of Kep Environmental Improvements.....	28

EXECUTIVE SUMMARY

The provinces of Kampot, Kep, and Koh Kong are the locations of subprojects of the Greater Mekong Subregion (GMS) Tourism Infrastructure for Inclusive Growth Project (the project) in Cambodia. Cambodia together with the Lao PDR and Viet Nam are the three countries that form the project. The provincial subprojects are comprised of small infrastructure and environmental improvement investments that have the inclusive goal of increasing and improving tourism and associated socioeconomic development at select locations. The development of tourism to enhance pro-poor employment is consistent with the GMS Strategic Framework 2012–2022, GMS Tourism Sector Strategy 2005–2015, and the current poverty reduction strategies of the participating countries.

The initial environmental examination (IEE) of the project presented herein addresses infrastructure subprojects in Kampot and Kep, Cambodia. The IEEs of the provincial subprojects in Viet Nam and the Lao PDR have been prepared separately.

Project Summary

The project in Cambodia is categorized ADB Category B at the feasibility design phase and includes the following infrastructure subprojects under Outputs 1 and 2 of the project. Outputs 3 and 4 support capacity building and project management, and are not addressed by the IEE:

Output 1: Last Mile Tourism Access Infrastructure Improved

Kampot Pier Development:

- New passenger pier and associated tourist support facilities including an upgraded access road.

Output 2: Environmental Services in Cross Border Tourism Centers Improved

Kep Crab Market Environmental Improvements:

- Crab market environmental improvements including a centralized wastewater collection and treatment system;

The passenger pier and support facilities will be located on the Teuk Chuu River south of Kampot town near the mouth of the river at Kampot Bay. Support facilities for the pier will include customs/immigration buildings, tourist information building and kiosks, car park, lighting, and public toilets. The goal of the subproject is to provide new tourism access to southern Kampot and the Cambodian coastal zone. The new pier may also be used by existing small cargo boats that are currently using a small port up-river near Kampot town. An interpretive mangrove demonstration area will be conserved in the middle of the pier facility to provide information and create awareness of the ecological importance of the extensive mangrove forests of Cambodia among tourists that use the passenger pier.

The new passenger pier is expected to provide tourists in the region with an additional destination and fast sea access between Cambodia and Kien Giang, Viet Nam. The existing access road to the pier area from Kampot town will be upgraded to accommodate tourists entering the area from the new passenger pier.

The crab market is the focal point of tourism in the town of Kep. Environmental improvements to the crab market area will include construction of centralized wastewater collection with an

Anaerobic Baffle Reactor (ABR) treatment system; upgraded car park; additional public toilets; upgraded solid waste management in the market area; upgraded power supply with improved lighting to the market area; and new signage.

Potential Impacts

The examination of the subprojects in Cambodia indicates that potential environmental impacts are largely restricted to the construction phase of the subproject components. The construction-related disturbances such as noise, dust, erosion, sedimentation, solid and liquid waste pollution, increased traffic and risk of worker and public injury can be managed with standard construction practices and guidelines (e.g., World Bank 2007).

Stakeholder consultations including household and village-level interviews underscored the need for effective management of noise, dust, traffic disruptions, and safety during the construction phase of the project. Follow-up meetings with the consulted stakeholders to address any construction-related issues are required.

The operation of the new passenger pier in Kampot could negatively affect the sensitive coastal resources and critical habitat in Kampot Bay as a result of the increased boat traffic and boat-related pollution in the area. The critical habitats that are exposed to the boat traffic are the offshore seagrass beds and adjacent mangrove forests. These nearshore critical habitats support well known rare and endangered species such as the marine mammal *Dugong ssp*, sea turtles, a rich diversity of fishes and crustaceans, as well as the inshore and offshore fisheries.

It is strongly recommended that a navigation management plan and restrictions are developed for the Teuk Chuu River and nearshore Kampot Bay to manage the increase in boat traffic that will occur in the vicinity of the new passenger pier in the river. The navigation plan, among other directives, should specify maximum boat draft and length, establish dedicated marked channels and lanes for different boat types, and demarcate the seagrass conservation areas, and mangrove areas which must not be traversed by boat.

A potentially significant issue with the operation of the selected alternative ABR septic system for wastewater management at the crab market in Kep concerns the medium and long-term sustainability of the waste treatment system due to the requirements for sufficient land area for the passive treatment process of the wastewater through the ABR infiltration field. Should the infiltration field become too small, unassimilated wastewater could leak laterally to the shoreline thereby degrading coastal water quality, or into groundwater and local domestic wells. The detailed design phase of the subproject should carefully assess the land area requirements for the infiltration phase of the ABR system, as well as local soil type and depth in view of the wastewater volumes to be treated.

Available data and information indicate the absence of terrestrial critical wildlife habitat, rare or endangered species, ecological protected areas, and cultural property and values at the subproject sites. However, a re-review of local sensitive ecological and cultural resources should occur at the detailed design stage. Similarly, a re-review of the existence and sensitivity of valued coastal ecological and cultural resources should occur to clarify potential impacts of the detailed designs. It is recommended that as part of the update of the EMPs at the detailed design stage, that supplementary data/information be reviewed.

Potential induced impacts of the subprojects stem from lateral development that could arise from increased tourism at the subproject areas. An example potential directly induced impact of increased tourism in Kep town is increased pollution from solid and domestic waste outside the

catchment areas of the solid waste and wastewater collection and treatment systems designed for Kep. More tourists result in greater consumption of goods and resources which can put greater strain on key tourism assets such as the cleanliness of local beaches, parks and promenades.

Potential indirect induced impacts of tourism development which are difficult to prevent are independent commercial and urban development that occurs in response to tourism growth created by the subprojects. The passenger pier in Kampot for example could become the seed for much greater, non-sustainable growth in both tourism and urban development along the coastline and interior of Kampot. Indirect induced tourism-socioeconomic growth is usually broader geographically and more difficult to manage with respect to impacts on environmental resources because of the different parties and interests involved.

Conclusions

The IEE concludes that the description of the feasibility design of the subprojects in Kampot and Kep combined with available information on the affected environments is sufficient to identify the scope of potential environmental impacts of the project in Cambodia. Providing that significant changes do not occur to the design of one or more of the subproject components, and that the supplementary sensitive receptor data, and final design information identified above is provided, that further detailed environmental impact assessment (EIA) of the project is not required.

The separate EMPs developed for the two subprojects provide impacts mitigation plans, environmental monitoring plans, and specify the institutional responsibilities and capacity needs for the environmental management of the subprojects. The IEE recommends that the EMPs be reviewed and updated during the detailed design phase in order to ensure that they fully address any potential impacts of the final subproject designs and operations.

I. INTRODUCTION

A. Background to IEE

1. The Greater Mekong Subregion (GMS) Tourism Infrastructure for Inclusive Growth Project (the project) is a multi-sector tourism investment project in Cambodia, the Lao PDR, and Viet Nam. The project is comprised of transport-related and environmental infrastructure subprojects and activities in twelve provinces of the three participating countries.

2. The objective of the project is to accelerate inclusive tourism growth in the targeted areas of the GMS. Inclusive growth is defined by local social and economic growth from tourism development that is environmentally sustainable. The development of tourism to enhance pro-poor employment is consistent with the GMS Strategic Framework 2012–2022, GMS Tourism Sector Strategy 2005–2015, and the current poverty reduction strategies of the participating countries. The GMS Tourism Sector Assessment, Strategy, and Roadmap indicate that ADB’s assistance to the tourism sector will focus on:

- 1) Improving last-mile tourism access infrastructure and environmental services in secondary destinations;
- 2) Capacity building for public official and local communities; and
- 3) Promoting multi country tour circuits.

3. The project is included in the participating countries ADB Country Partnership Strategies which emphasize the need to improve rural transport infrastructure, expand municipal infrastructure and services, and promote small and medium-sized enterprises to boost the poor’s access to economic opportunities. The project has four outputs as follows:

- Output 1: *Last Mile Tourism Access Infrastructure Improved* which includes new and upgraded roads, passenger piers, and new and improved tourism support facilities;
- Output 2: *Environmental Services in Cross Border Tourism Centers Improved* which includes improved wastewater and solid waste management systems;
- Output 3: *Institutional Capacity to Promote Inclusive Tourism Growth Strengthened*; and
- Output 4: *Effective Project Implementation and Knowledge Management*.

4. Output 1 and Output 2 are derived from the infrastructure investments, whereas Outputs 3 and 4 comprise “softer” tourism development initiatives such as tourism planning and management, development of public-private partnerships, and counterpart capacity building and training in tourism. The two subprojects in the provinces of Kampot and Kep (Table 1) are the focus of the IEE presented herein (Figure 1).

Figure 1: Project Provinces in Cambodia

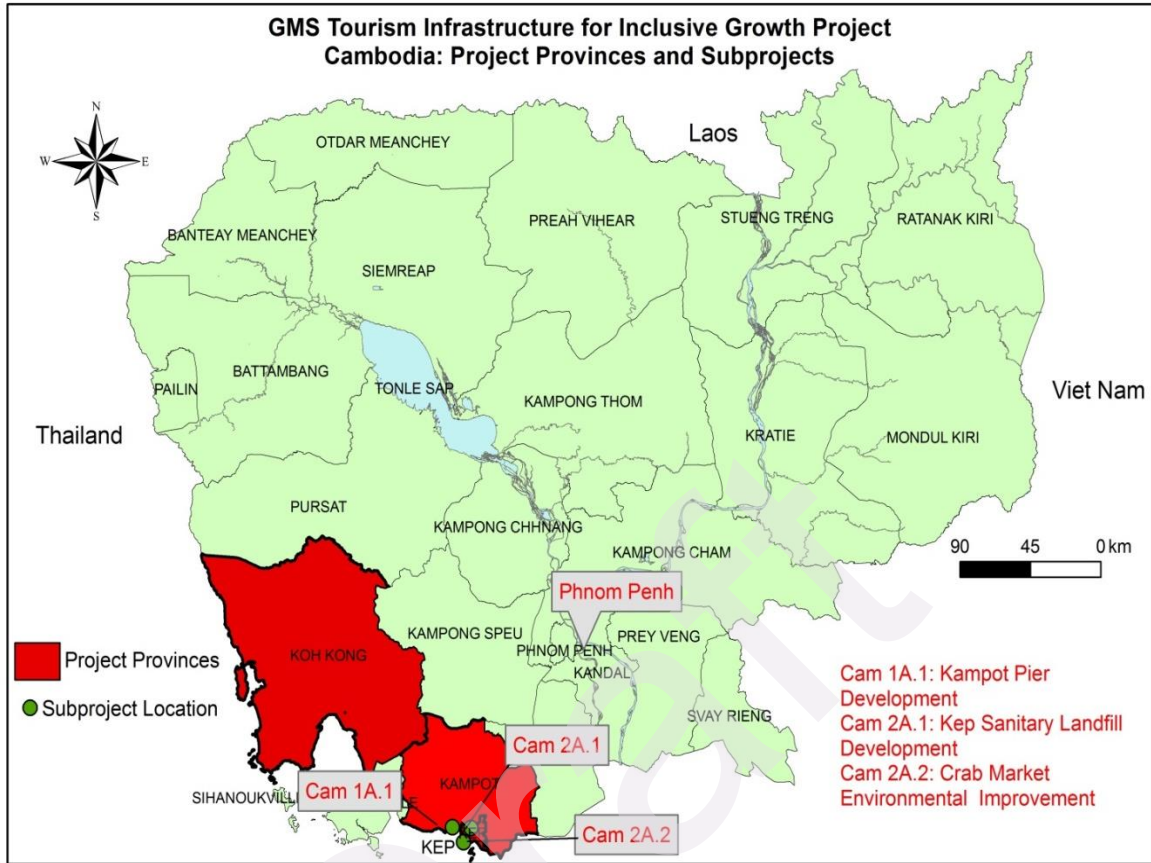


Table 1: Summary of Output 1 and 2 Activities in Kampot and Kep

Output 1: Last Mile Tourism Access Infrastructure Improved
Kampot Pier Development: <ul style="list-style-type: none"> • New passenger pier and associated tourist support facilities including upgraded access road.
Output 2: Environmental Services in Cross Border Tourism Centers Improved
Kep Crab Market Environmental Improvements: <ul style="list-style-type: none"> • Crab market environmental improvements including a new wastewater collection and treatment system

B. Assessment Context

5. The project is categorized Category B pursuant to the ADB’s safeguard policy¹ and recent good practice sourcebook guidance.² A category B project will have potential adverse impacts that are less adverse than those of a category A project, are site-specific, largely reversible, and can be mitigated with an environmental management plan.³The government of

¹ADB, 2009. Safeguard Policy Statement. Manila

²ADB, 2012, *Environmental Safeguards, A Good Practice Sourcebook*, Draft. Manila.

³Footnote 2, pg 19.

Cambodia (Government) requires that a Cambodian environmental impact assessment (EIA) (see below) be conducted for both subprojects.

6. The IEE was prepared for the *feasibility design stage* of the Cambodian subprojects using available data and information on sensitive ecological and cultural receptors that exist near the different subproject sites. Detailed designs for the subprojects will follow project approval. Environmental management plans (EMP) have been prepared for the subprojects in Kampot and Kep which will be updated where necessary to meet the completed detailed designs of the subprojects.

7. The subproject area of Kampot province is delimited by the coastal zone of Kampot bay, the mouth of the Teuk Chuu River, and southern peri-urban area of Kampot town along the east side of the river. The coastal zone of Kampot is noted for extensive seagrass beds and mangrove forests which support rare and endangered marine animals including the green turtle and sea cow, a marine mammal.⁴The crab market of Kep is situated in the centre of Kep town on the coast just east of Kampot.

1. Impact Footprints

8. The subproject activities in Kep are located in an existing tourist area defined by the crab market which means the potential impacts of the subproject will be marginal to the existing impact footprint of the crab market. Nonetheless, the project will need to ensure that the completed subproject activities do not increase the impact footprint of the crab market area. However, the ABR wastewater treatment system should actually reduce the existing impact footprint of the market by consolidating and treating wastewater that currently is discharged freely throughout the area.

9. The new pier at the mouth of the Teuk Chuu River will result in the addition of tourist boat traffic to the cargo and fishing boat traffic that already exists in the river. As introduced above and elaborated further below, the challenge for the project in Kampot is to not expand the impact footprint of boat activities on the well documented nearshore sensitive coastal resources of Kampot bay.

II. POLICY, LEGAL, AND ADMINISTRATIVE FRAMEWORK

A. Environmental Impact Assessment

10. Environmental impact assessment in Cambodia is guided by the Royal Government of Cambodia (RGC) sub-decree on EIA, No 72 ANRK.BK issued on August 11th, 1999, and the Prakas No 376 BRK B.S. on September 2nd, 2009, on Guideline of Initial Environmental Impact Assessment (IEIA) and full EIA.

11. In compliance with the sub-decree on EIA, all individuals, private companies, joint-venture companies, public companies, ministries and government agencies are obliged to conduct an environmental impact assessment for proposed projects or activities, which must be submitted for approval by the MOE. The decree provides a list of project types that proponents use to screen projects for requiring either an EIA or Initial EIA (IEIA). From consultations with the MOE and provincial Departments of Environment (DOE), the subprojects in Kep and

⁴ IUCN Red List

Kampot will require a Cambodian EIA that will be administered by MOE because of the size of the subprojects, and because the subproject costs exceed \$1,000,000. As dictated by No 72 ANRK.BK, the MOE is required to complete their review of a submitted IEIA or EIA within 30 working days to conclude the approval process.

12. The IEE presented herein exceeds the requirements of Sub-decree No 72 ANRK.BK on EIA. The scope of the assessment of the IEE required of the ADB SPS (2009) also exceeds the supporting RGC Prakas guideline IEIA/EIA.

B. Legal and Policy Framework for Environmental Protection

13. The Government of Cambodia has established specific laws and regulations for forests, protected areas, and land management to ensure sustainable development. The key elements of the legal and policy framework for the project include the following:

- Law on Environmental Protection and Natural Resources Management, enacted by National Assembly, 1996, promulgated by Preah Reach Kram/NS/RKM/-1296/36;
- Law on Natural Protected Areas enacted by National Assembly, 2008, promulgated by Preah Reach Kram/NS/RKM/0208/007;
- Law on Fisheries Management and Administration (1989);
- Law on Forest enacted by National Assembly, 2002, promulgated by Preah Reach Kram/NS/RKM/0802/016;
- Law on Land enacted by National Assembly, 2001, promulgated by Preah Reach Kram/RKM/0801/14;
- Law on Water Resource Management produced by Ministry of Water Resources and Meteorology (MOWRAM); and
- Circular No 01 SRN issued on February 3rd, 2012, Royal Government of Cambodia on Cambodia Coastal Zone Development

14. Key directives in support of the Law on Environmental Protection and Natural Resources Management include:

- Law on Natural Protected Areas (2008); and
- Sub-decree on Water Pollution Control (1999):
 - Annex 2: Industrial effluent standards (including WWTPs);
 - Annex 4: Water quality standards for public water and biodiversity; and
 - Annex 5: Water quality standards for public waters and health.

15. Other pertinent regulations, policy, or guidelines for the project are as follows:

- Directive on Industrial Sludge Management (MOE, 2000);
- Directive on Industrial Hazardous Waste Management (MOE, 2000);
- Directive on Managing Health Wastes in the Kingdom of Cambodia (MOH, 2008)
- Preah Reach Kept on Creation of Fisheries Communities (2005); and
- Anklets on establishment of protected forests, natural resources conservations, wildlife protection areas, protected forest for biodiversity conservation (2002 and 2004).

16. Cambodia is signatory to many international environmental treaties and conventions which provide a comprehensive legal framework related to coastal management. These include: the Coordinating Body of the Seas of East Asia (1995), Association of South East Asian Nations (1999), MARPOL (1994), Biodiversity convention (1994), CITES convention (1997), Ramses convention (1999) and Climate Change convention (1995) (MOE 2006). The closest Ramses site to the subproject areas is more than 100 km away in Koh Kapok, Koh Kong province to the west.

17. The Government standards for industrial effluent discharge, ambient surface and coastal water quality, and public waters and health of Annexes 2 - 5 of the sub-decree on Water Pollution Control (1999) are reproduced in Appendix A.

18. Occupation and Community Safety and Health (OHS) guidelines for Government follow the recent OHS Programme for Cambodia (2010-2013) that was developed by the International Labour Organization (ILO). The draft guidelines provide the framework for instituting OHS at the workplace and in the community.

19. For all other applicable environmental standards and criteria such as ambient air quality, vibration, noise, contaminated soil, and workplace and community safety the standards and protocols of the Environment, Health and Safety Guidelines of the World Bank (2007) will apply.

C. Agencies Responsible for Coastal Zone Management and Assessment

20. At the national level, agencies in Cambodia that oversee environment and natural resources management are listed below. Most of Ministries have provincial counterpart departments.

- Ministry of Environment (MOE);
- Ministry of Agriculture, Forestry and Fisheries (MAFF);
- Ministry of Water Resources and Meteorology (MOWRAM);
- Ministry of Mine and Energy (MME);
- Ministry of Industry and Handicraft (MIH);
- Ministry of Land Management; and Urban Planning (MLUP);
- Ministry of Tourism (MOT);
- Ministry of Public Works and Transport (MPWT) and a cross-ministerial policy body of
- National Climate Change Committee (NCCC).

1. Inland Waterways and Maritime Ports Authority

21. The Inland Waterways and Maritime Ports Units the MPWT is responsible for managing river navigation and coastal ports. A Ports Authority to oversee all ports in Cambodia is being considered by the MPWT. Currently, navigation buoy systems are poorly developed in major Cambodian rivers (e.g., Mekong River) and coastal area.

22. Important offices of the MOE for the project include:

- Coastal Coordination Unit⁵ which:

⁵ Rizvi,A.R. and Singer,U. (2011). Cambodia Coastal Situation Analysis, Gland, Switzerland: IUCN. 58 pp.

- promotes sustainable development in the coastal zone of Cambodia;
- coordinates with donors, NGOs, and other line ministries with coastal zone developments;⁶ and
- provides advice and guidance for environmental protection of the coastal zone resources.
- Nature Protection and Conservation Administration (NPCA) which, *inter alia*,
 - produce strategic plans and technical guidelines for managing protected areas;
 - investigates and polices land use violations in protected areas; and
 - disseminate information, and conducts awareness campaigns for the protection of the resources in protected areas.

23. The MAFF is responsible for the management and protection of coastal mangrove forests, and wildlife and fisheries. The Fisheries Administration (FA) at the national and provincial levels is responsible for all fisheries related matters as summarized below:

- Prepare and establish fishery resource and aquaculture inventories;
- Enact laws, regulations, and orders for fishery protection, management and improvement of fishery resources and habitat;
- Manage fishery zones, fishery conservation and establish fishery resource development policies;
- Conduct scientific studies of fisheries and aquaculture; and
- Inspect and manage fishery resource exploitation and aquaculture activities.

24. The EIA Department of the MOE oversees and regulates EIA, and coordinates the implementation of projects in collaboration with project executive agencies (EA) and concerned ministries. The MOE has the following responsibilities:

1. Review, evaluate, and approve submitted environmental impact assessments in collaboration with other concerned ministries; and
2. Monitor to ensure a project owner (the executing agency of the project) satisfactorily implements the Environmental Management Plan (EMP) throughout pre-construction, construction and operational phases of the projects.

25. The ministries are represented and supported at the provincial, town, and district/commune levels by counterpart line departments, agencies, and sub-offices. The counterparts are responsible to extend and implement the mandate of their parent ministries to the commune level.

26. The IEE prepared for subprojects in Cambodia exceeds or meets the EIA requirements of the MOE. The IEE will provide guidance to the national consultants who will prepare the EIA if required by the MOE during project implementation.

D. ADB Safeguard Policy

27. The ADB safeguard policy statement (ADB 2009) along with the recent *Good Practice Safeguard Sourcebook* clarify the rationale, scope and content of an environmental assessment and supported by technical guidelines (e.g., Environmental Assessment Guidelines, 2003).

⁶ e.g., MOE and Danida, 2006. Cambodia Shoreline Management Strategy, 97 pgs + appendices

Projects are initially screened to determine the level of assessment that is required according to the following three environmental categories (A, B, or C).

28. Category A is assigned to projects that normally cause significant or major environmental impacts that are irreversible, diverse or unprecedented such as hydroelectric dams (an Environmental Impact Assessment is required). Category B projects have potential adverse impacts that are less adverse than those of category A, are site-specific, largely reversible, and for which mitigation measures can be designed more readily than for category A projects (an Initial Environmental Examination is required). Category C projects are likely to have minimal or no negative environmental impacts. An environmental assessment for Category C projects is not required but environmental implications need to be reviewed.

III. DESCRIPTION OF CAMBODIA SUBPROJECTS

29. The subprojects for Output 1 and 2 in Kampot and Kep provinces are described below.

A. Output 1: Last Mile Tourism Access Infrastructure Improved

1. Kampot Pier Development

a. Current situation

30. Kampot Province provides the entry point to southern coastal attractions of Cambodia. Kampot town lies approximately 150km from Phnom Penh and can be accessed by road with relative ease in approximately 3hours via National Highway 3. Development of a passenger pier south-east of Kampot town will create new multi-modal options for transporting passengers and light freight between Cambodia, Viet Nam, and other international coastal destinations. The pier will also provide a staging point for local excursions.

b. Subproject description

31. The Kampot passenger pier will be developed on a vacant 4.0 ha site located at Chomkreal village, Chomkreal commune, Teuk Chou district on the east bank of the Teuk Chuu River approximately 10 km downstream of Kampot at the discharge of the river to Kampot bay (Figure 2). Vehicular access to the site is via the main Kampot-Kep Highway H123 and then along a well-constructed earth road for about 6 km through low lying salt farms situated along the river. The components of the passenger pier development are summarized in Table 2 with the plan view of the facility shown in Figure3.

32. In addition to the primary pier facilities listed above a system of navigational aids will be installed to identify the channel from the Teuk Chuu River into Kampot Bay that is used by current cargo and fishing boat traffic. The objective is to distinguish the scoured boat channel from the adjacent environmentally sensitive seagrass beds that exist on both sides of the channel out into Kampot bay. The navigational system will also benefit the objective increase in boat traffic in the area.

Figure 2: Passenger Pier Site and Access Road (red) from Highway to Kampot Town (left)

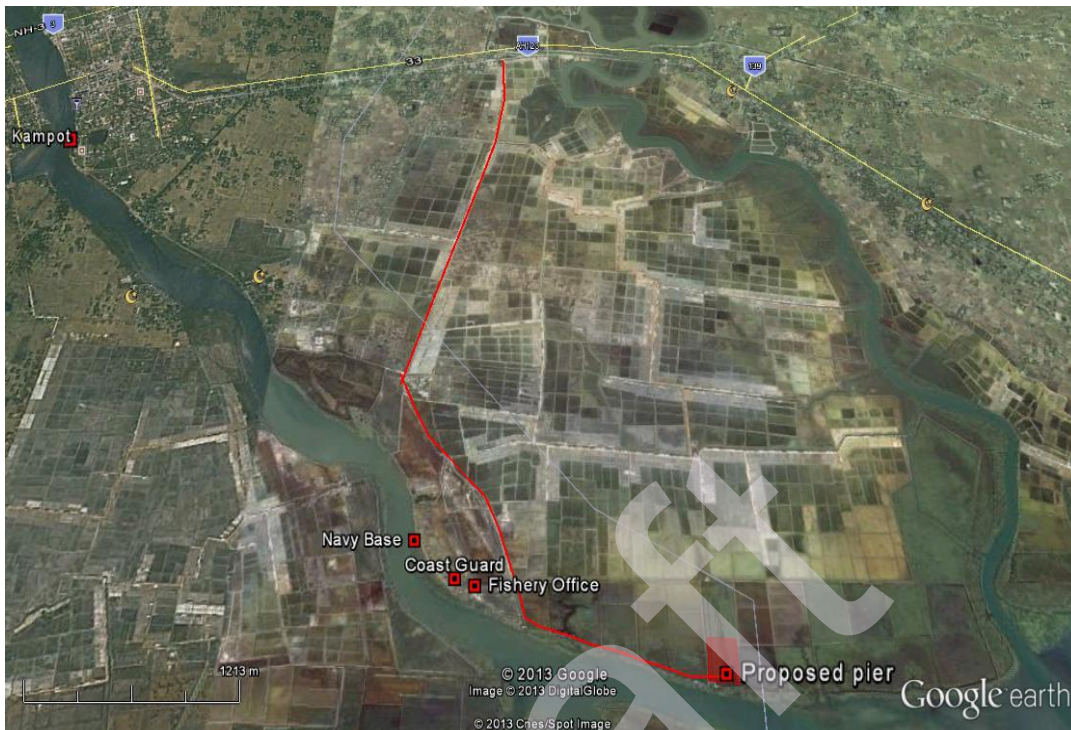
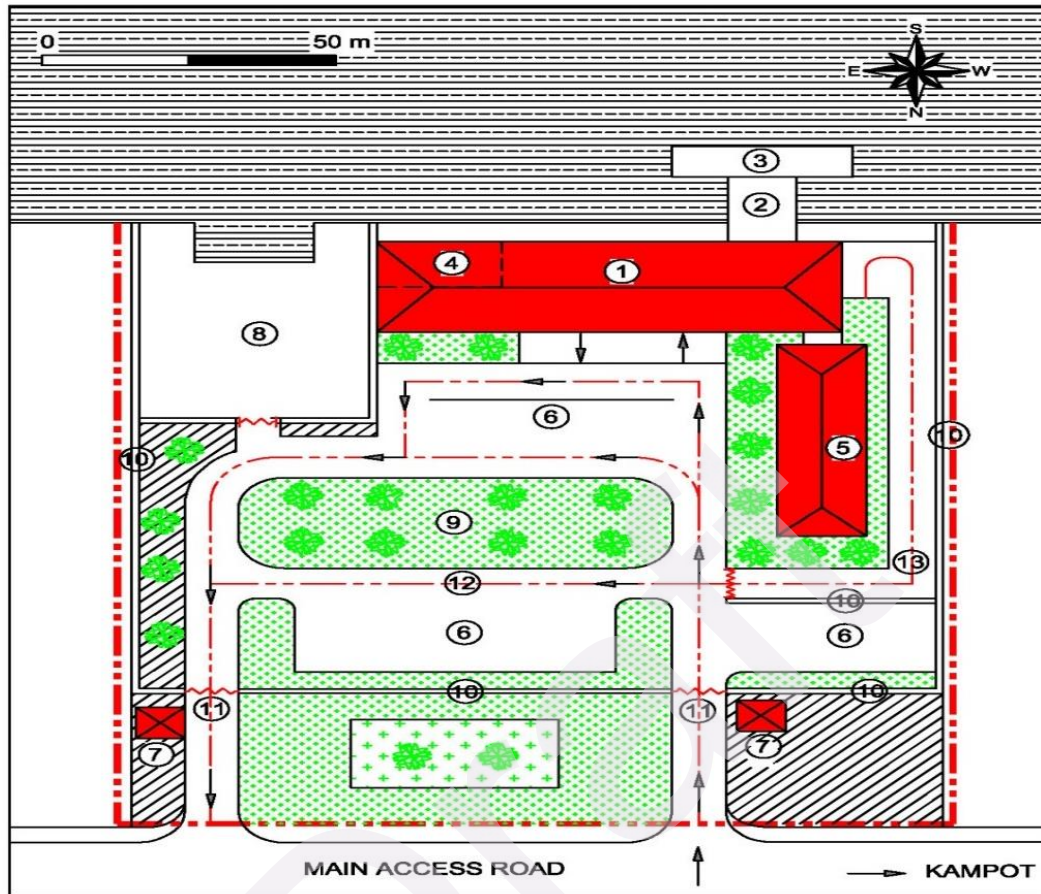


Table 2: Components of New Passenger Pier at Kampot

Activity	General Specifications
Upgrade existing 6.5 km access road	<ul style="list-style-type: none"> 6.5 km X 6m carriageway Concrete surface
Install new embankment stabilization structure	
Construct new internal access roads	
Construct new passenger landing area	<ul style="list-style-type: none"> 1,500 m²
Construct new jetty and pier	<ul style="list-style-type: none"> suitable for tidal and flood level fluctuation;
Construct new passenger arrival/departure hall with customs/immigration offices, administration and ticket offices, landscaped tourist reception/information center	<ul style="list-style-type: none"> total area of 2,500 m² equipment to support customs and immigration operations
Construct new public toilets	<ul style="list-style-type: none"> with ABR septic system
Construct new parking area	<ul style="list-style-type: none"> 2,000 m²
Build new kiosks for food, beverage and souvenir vendors	<ul style="list-style-type: none"> 750 m²
Install new power supply and lighting system to all internal and external public areas	
Install new water supply using a borehole	<ul style="list-style-type: none"> pumps and tanks with back up rain catch technology
Construct new solid waste management	<ul style="list-style-type: none"> garbage bins
Construct new perimeter security fence	
Install directional and information signage	
Construct other supporting infrastructure utilities	

Figure3: Plan View of Passenger Pier on Teuk Chuu River South of Kampot Town



SUBPROJECT COMPONENTS

- | | | |
|---|---|-------------------------------|
| 1. Main passenger arrival/departure hall with customs/immigration office, stalls kiosks, public toilets | 4. Riverside restaurant | 9. Landscaped open space |
| 2. Covered access to passenger pier | 5. Souvenir stalls/kiosks | 10. Perimeter fence |
| 3. Passenger pier | 6. Vehicle parking area | 11. Main entrance/exit gate |
| --- | 7. Security guard | 12. Main internal access road |
| --- | 8. Boat maintenance/fuel store are (future development) | 13. Service road to pier |
- Subproject boundary
 ■ Subproject building
 - - - Road centerline

B. Output 2: Environmental Services at Border Tourism Centers Improved

1. Kep Crab Market Environmental Improvements

a. Current situation

33. The small coastal province of Kep is inset in the province of Kampot. The Kep town crab market is located on the seashore about 1.0km west of the main city beach. The market area includes about 33 vendors and an adjoining small covered dry goods area.

34. West of the market in a large open public area are food stall and recently constructed public toilets. To the east of the market, stretching for almost 200 m is a row of about 30 privately managed sea food restaurants and stalls built in a linked terrace formation and in many

places projecting out over the beach. Sanitation in these structures is by septic tanks built under the structures with no visible means of access and maintenance. Liquid effluent from the tanks as well as kitchen and bathroom sullage is discharged directly into the sea. The market is accessed by a wide paved city road which leads to an unpaved vehicle parking area running the length of the market and restaurants (Figure 4).

35. Limited space within the market area often results in high congestion. Similarly, there is a high incidence of congestion and vehicle/pedestrian in the parking area. Of critical concern is the need to upgrade sanitation and stop untreated effluent discharge to the sea adjacent to the restaurants and food stalls. This practice risks public health from the consumption of contaminated sea food.

b. Subproject description

36. The subproject activities listed in Table 3 will be implemented to improve environmental conditions in the crab market area, and the overall quality of the tourist experience in Kep town.

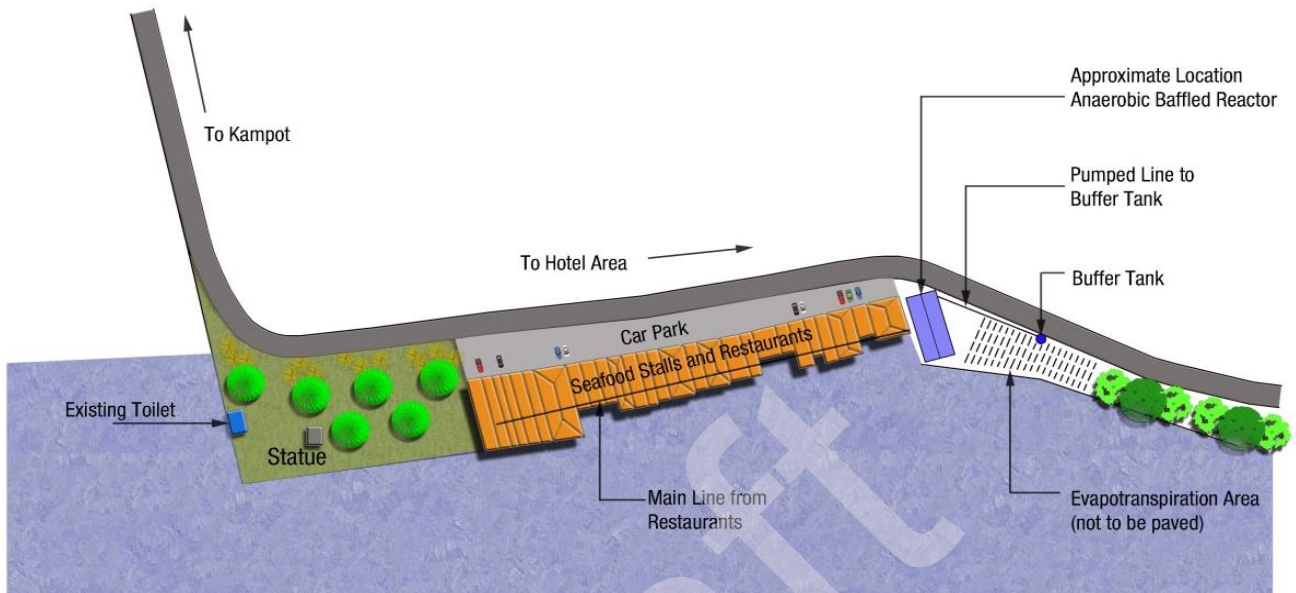
Table 3: Summary of Components of Environmental Improvements to Crab Market

Activity	General Specifications
Install new series of anaerobic baffle reactor (ABR) tanks to receive domestic waste	<ul style="list-style-type: none"> • capacity 500m³/day • connected to public toilets, shops and restaurant stalls, not nearby hotels
Expand existing crab market structure to the adjacent dry goods area,	<ul style="list-style-type: none"> • upgrade internal drainage • create area for future cold storage facilities in the crab market
Pave existing parking lot	
Install additional public toilets	<ul style="list-style-type: none"> • linked to ABR system
Upgrade existing waste management system of market area	<ul style="list-style-type: none"> • including provisions for routine de-sludging of ABR septic tanks
Upgrade existing power supply and install improved lighting to the market and adjacent open areas	
Install signage in key locations	

37. **Anaerobic baffled reactor (ABR).** An ABR is a specialized septic tank system. The ABR contains a series of interior vertical baffles over which the wastewater that enters the tank is forced to flow. The increased contact time with the active biomass (sludge) in the tank results in better waste treatment and produces a quality of discharge that is cleaner than the raw discharge from a standard septic tank.

38. The technology is easily adaptable to the household level or for a small neighborhood. An ABR can be designed for a cluster of point sources such as a residential area or a shopping complex that uses large volumes of water for domestic purposes. As for all wastewater treatment systems, optimal treatment occurs from steady water usage and wastewater production.

Figure 4: Plan View of Existing Seaside Crab Market in Kep



39. This technology is appropriate for areas where land may be limited since the tank(s) can be installed underground or above ground in an isolated area. For the crab market the ABR tank(s) could either be placed below the car park or below the existing bank of restaurants beside the crab market. The access cover of the ABR would be flush with the car park to not impede traffic movement, or easily accessible via a dedicated passage to the site underneath the restaurants.

40. Placement of the ABR tank underneath existing restaurants would allow waste to fall a short distance by gravity through a single collector pipe to the ABR, whereas, waste would have to be collected to a central point and pumped up to the car park location depending on grade and the depth of the ABR tank(s). At either location the ABR would be constructed of reinforced concrete with cast-iron access covers, and designed to be physically isolated from the surrounding environment. The access covers would be accessed when de-sludging of any of the compartments was required. Sludge would be discharged at a landfill or disposal area that is approved by the MOE. A candidate site for consideration for sludge disposal is the site selected by MOE for the sludge from the ABR system at the new Kampot pier.

41. The outlet of the ABR tank channels the liquid phase into an infiltration gallery which forms the passive treatment *plant* of the system. The raw waste is conveyed out to the infiltration gallery through either slotted PVC pipe or drain coil. The gallery would be installed underneath the new promenade that has been constructed south of the crab market. The grassy area provides sufficient area and volume for the infiltration gallery.

42. The raw effluent moving from the ABR tank(s) to the adequately designed capacity infiltration field would have no environmental impact because the filtration field allows passive assimilation of the wastewater into the bed of the field. The filtration capacity of the area around the ABR's would need to be re-checked prior to installation to ensure that there is enough area, proper soil, and no domestic groundwater wells.

Underground tank option

43. If the permeability in the area of the crab market is low the alternate option would be to provide underground tanks in which to capture the wastewater. While not the best solution these tanks would store the wastewater until such time as a tanker had the opportunity to pump these tanks out for discharge at a landfill or disposal area that is approved by the MOE.

44. The ABR technology has been used extensively in Indonesia for small communities and has proven very successful hence the proposal for utilizing an ABR system in Kep market area. Detailed design will determine the required number of ABR units. The typical flow range for an ABR is from 2,000 to 200,000 l/day with size being dependent on the wastewater generating capacity of the crab market. Because the ABR must be de-sludged regularly vacuum trucks must be able to access the ABR areas easily, which the parking lot location will provide. And, as indicated above the location for disposal of the ABR sludge must be determined by MOE.

Summary of features

45. The positive and negative features of the ABR system are summarized as follows:

Positive

- resistant to organic and hydraulic shock loads
- no electrical energy required
- grey water can be managed concurrently
- can be built and repaired with locally available materials
- long service life
- few problems with flies or odor if used correctly
- high reduction of organics
- moderate capital costs, moderate operating costs depending on emptying: can be low cost depending on number of users

Negative

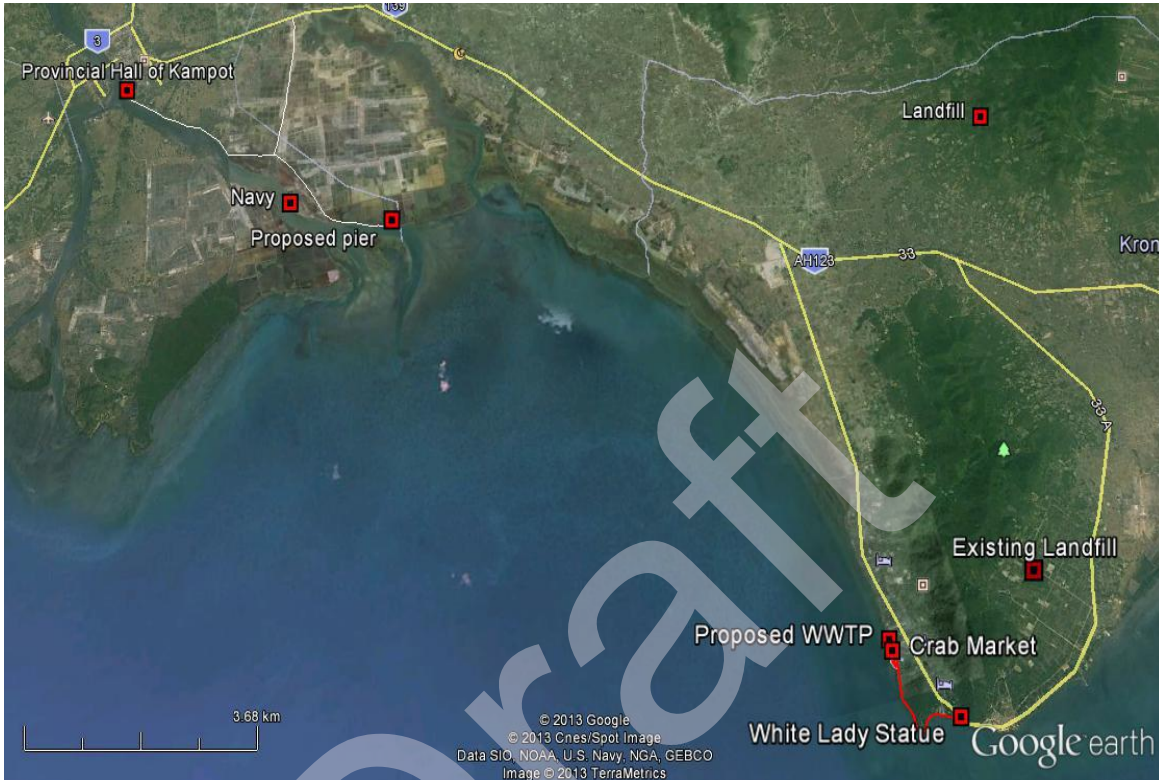
- requires constant source of water
- effluent requires secondary treatment and/or appropriate discharge i.e., planned filtration gallery field
- low reduction in pathogens at the exit of ABR tank (but total assimilation with infiltration field)
- requires expert design and construction
- pretreatment (screens or grease traps) may be required to prevent clogging (such as installing grease and oil traps at source)

Maintenance

46. The ABR tank should be checked to ensure that they are watertight and the levels of the scum and sludge should be monitored to ensure that the tank is functioning well. Because of the delicate anaerobic treatment environment in the ABR, care should be taken enter harsh chemicals into the ABR. The sludge should be removed and disposed annually using a vacuum truck to ensure proper functioning of the unit.

47. Figure 5 summarizes the geographic relationship between subprojects in Kampot and Kep.

Figure 5: Location of all Subprojects in Kampot and Kep, Cambodia



IV. DESCRIPTION OF AFFECTED ENVIRONMENTS

48. The description of the affected environments focuses on the environmental features that could possibly be affected by the subprojects, or could possibly influence the implementation and successful operation of the subprojects.

A. General Country Environmental Profile

1. Climate

49. Southern Cambodia experiences a tropical monsoon climate with two distinct seasons: (i) the dry season from approximately November to April associated with the northeast monsoon which provides drier and cooler air with February being the driest month; (ii) the wet season from May to October during which rainfall is largely derived from the southwest monsoon drawn inland from the Indian Ocean.

50. The rainfall pattern is bi-modal with peaks in June and September/October. In the dry season, the temperature of the province is high in April with an average of 36.6C and the coldest month is February with an average temperature of 21.10C. The average annual rainfall in Kampot-Kep is 1,407 mm with the greatest level recorded being 2,604mm.

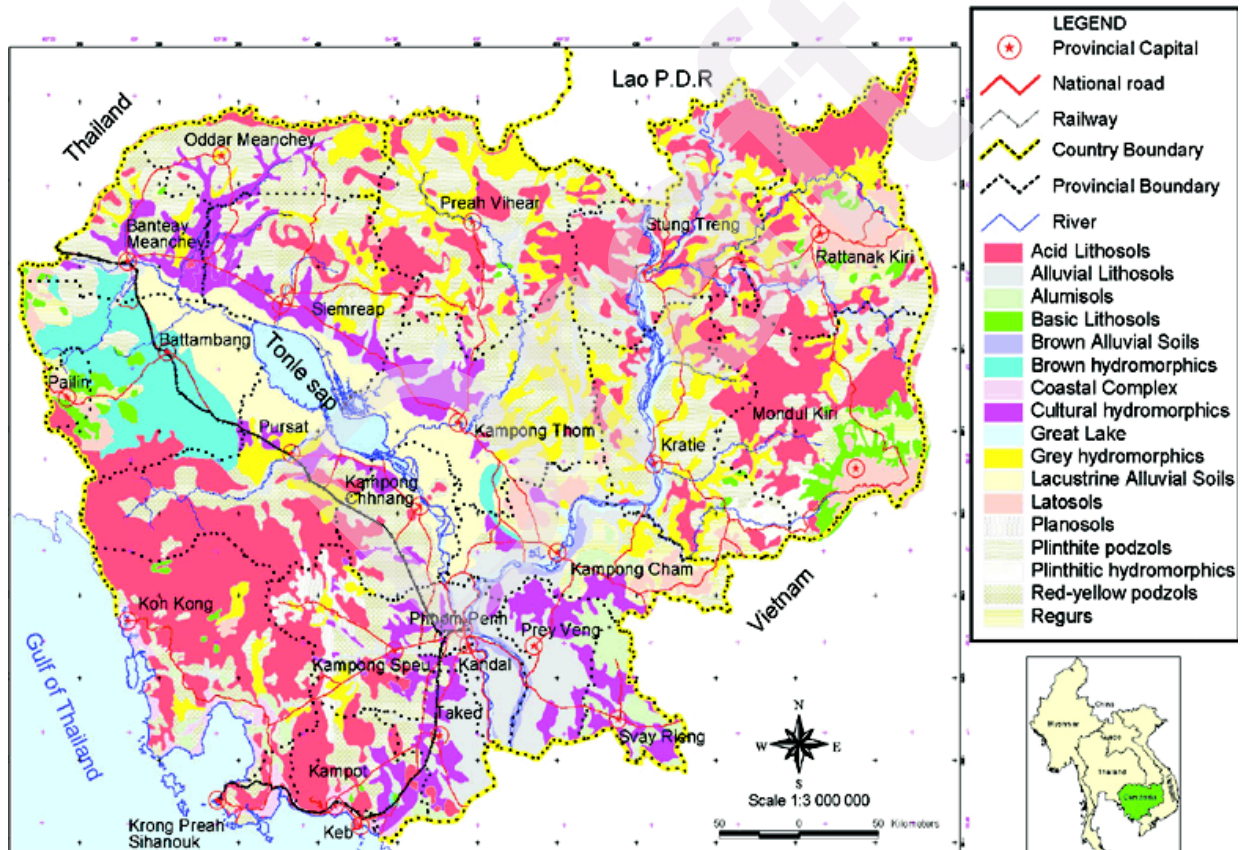
2. Soils

51. The soils of coastal Kampot and Kep are dominated by a mix of old and young alluvium soils of sediment deposits from rivers and streams (Figure 6).⁷ These are mainly finer sediments, thus a high concentration of silt is found in the coastal and nearshore areas. Alluvial deposits normally result in fertile land.

3. Forest Areas

52. The forest types/areas of Cambodia are shown in Figure 7.⁸ Most of the major forests are situated in the southeastern, central, and northeastern regions of the country. Forest cover in Kampot and Kep is relatively sparse with most forested areas located in Bokor National Park northwest of Kampot subproject site and in Kep National Park east of the crab market.

Figure 6: Soil Types of Cambodia



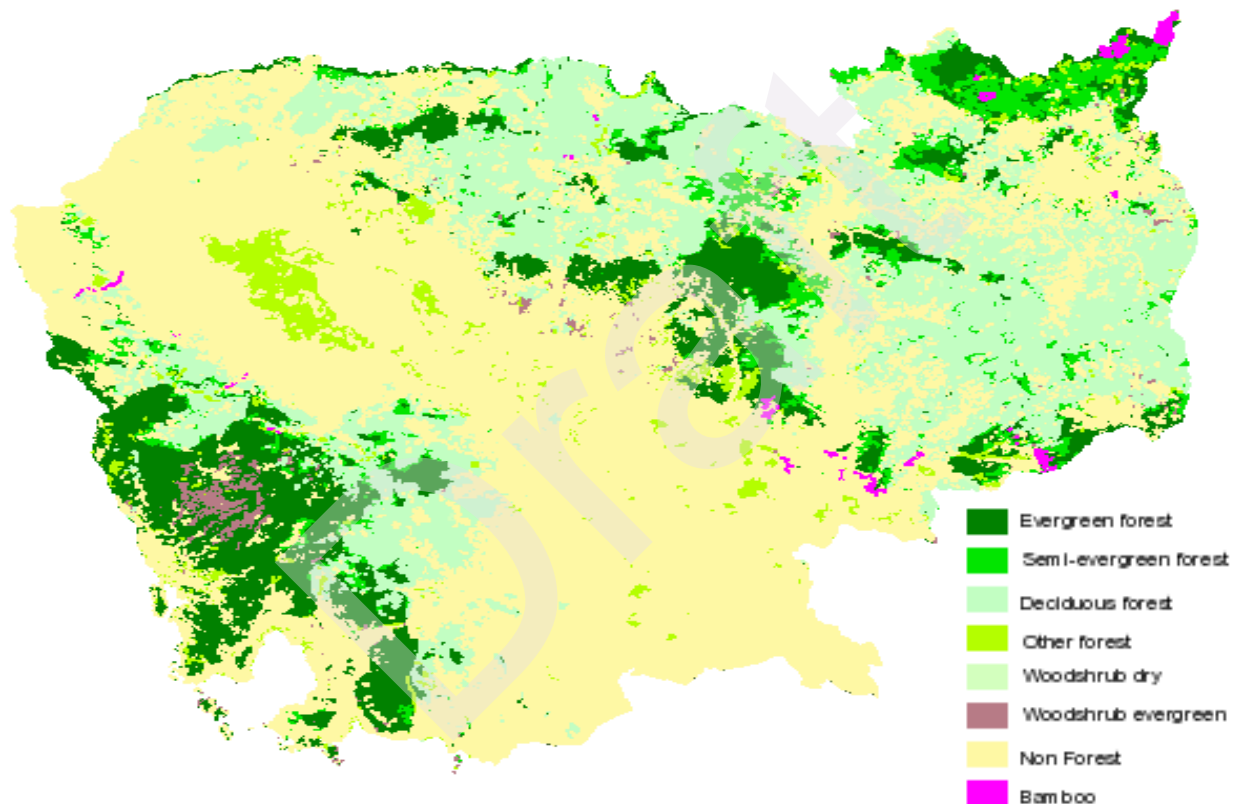
⁷ MOE 2004

⁸ NREM DATA TOOL BOX -Royal Danish Embassy- Danida - Phnom Penh, Cambodia, March 2007.

B. Kampot and Kep Subproject Areas

53. The province of Kampot is located in southwestern Cambodia with a total coastline of 73 kilometers (excluding Kep). The coastline extends east to Ha Tien of the province of Kien Giang, Viet Nam. The province occupies 4,873 km² and consists of 8 districts, 92 communes, and 104,993 households. The total population of the province is 528,405. The 8 districts are Kampong Bay, Kampot, Chhuk, Dang Tung, Chum Kiri, Kampong Trach, Banteay Meas, and Angkor Chey. Three of these districts – Kampong Bay, Kampot and Kampong Trach are located in the coastal area with 26 villages. The smaller province of Kep is surrounded by Kampot.

Figure 7: Forest Types of Cambodia



1. Bio-physical Features

54. The topography and land use of the coastal zone south of Kampot town is characterized by a mix of relatively sparse agriculture, salt harvesting fields, and mangrove forests which occur along the Teuk Chuu River which flows through Kampot town south to Kampot Bay. The salt producing operations (seawater evaporation) adjacent to the Teuk Chuu River are extensive and dominate the land use of the area.

a. Rivers

55. Many rivers drain to the coastal area some of which commonly dry up in the dry season. During the dry season the lower reaches of the rivers are brackish. Some rivers emptying to the sea are listed in Error! Reference source not found.4.⁹

Table 4: Rivers Discharging to Kampot Bay near the Subproject Area.

<ol style="list-style-type: none"> 1. Kbal Romeas River flowing from Kam Chai Mountain in Kampot district. 2. Teuk Chuu River* flowing through Kampot town south to Kampot Bay 3. Koh Toch River, flowing from Bokor area in Kampot district. 4. Kdart River flowing from Bokor area in Kampot district. 5. Smach River flowing from Bokor area in Kampot district. 6. Thnaout River flowing from Bokor area in Kampot district. 7. Trapeng Ropov R river flowing from Bokor area in Kampot district.

*Passenger pier will be located on east bank of Teuk Chuu River above river mouth.

b. Surface Water Quality

56. The freshwater and coastal water quality of Cambodia is comparatively good compared to other regions of Southeast Asia. However, the steadily increasing industrial development, intensive agriculture, and deforestation in Cambodia is reducing the quality of surface waters in different areas due pollution from untreated effluents, land erosion, and agriculture chemicals.

57. A summary of water quality during the dry season at river and coastal sites is summarized in Table 55. Recent water quality survey sites for Kampot and Kep are shown in Figure 8.¹⁰

Table 5: Dry-season River and Coastal Water Quality 2005 - 2006

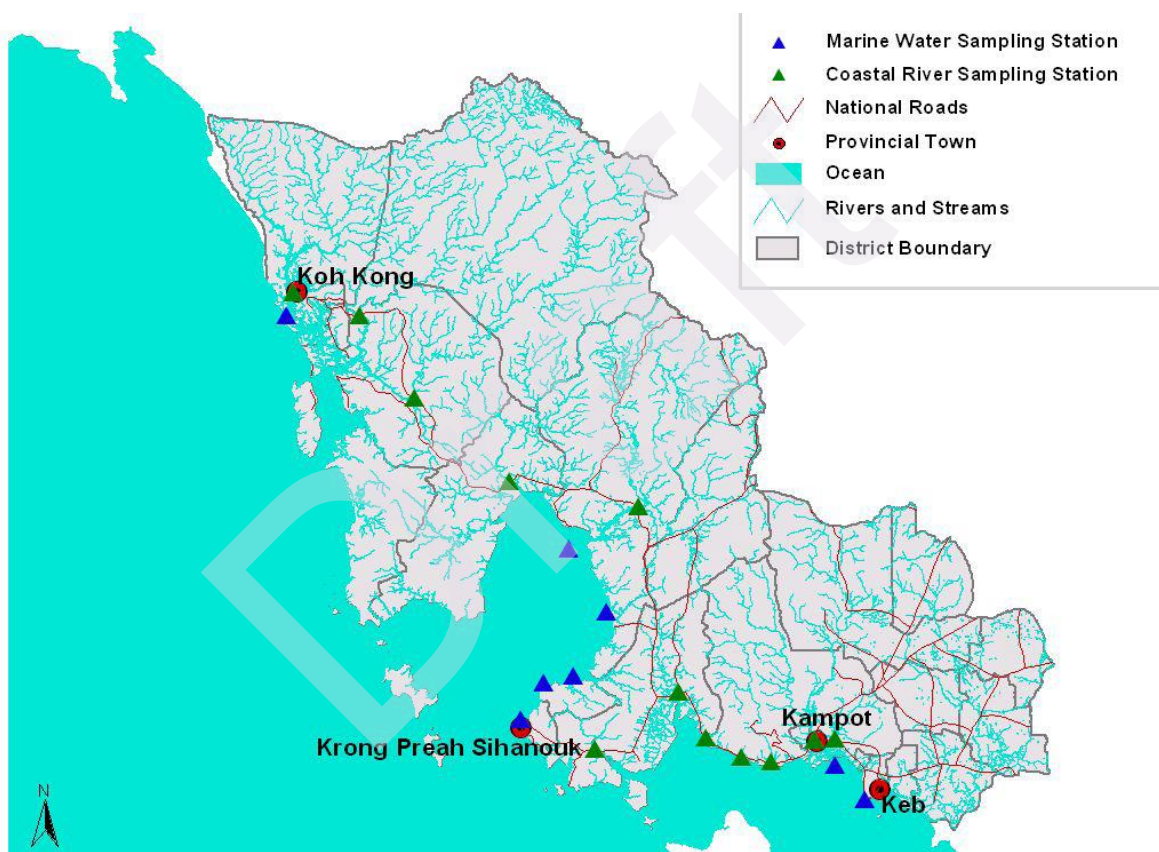
Variable	Average	Maximum	Minimum	Government Standard
River				
288 samples from 12 sites				
Temp	30.5	33.2	27.6	
pH	7.7	8.1	7.3	6.5 - 8.5
Salinity (‰)	12.9	20.3	3.8	
Secchi depth (m)	1.4	1.9	0.8	
total suspended solids (mg/l)	11.1	26.5	2.7	25-100
dissolved oxygen (mg/l)	5.2	6.1	4.5	2.0 - 7.5
biological oxygen demand mg/l)	0.7	1.2	0.4	1 - 10
total nitrogen (mg/l)	0.09	0.18	0.04	
total phosphorous (mg/l)	0.008	0.02	0.002	
Coastal				
96 samples from 8 sites				
Temp	29.6	32.5	26.1	
pH	7.8	8.1	7.6	7.0 – 8.3

⁹ DOE and Danida, 2002. State of Environment Report for Kampot province

¹⁰ DOE and Danida, 2006. Second Annual Monitoring Report for Coastal Rivers and Nearshore Coastal Waters of Cambodia.

Variable	Average	Maximum	Minimum	Government Standard
Salinity (‰)	25.8	30.1	20.8	
Secchi depth (m)	1.9	2.3	1.3	
total suspended solids (mg/l)	17.7	37.6	3.1	
dissolved oxygen (mg/l)	5.3	6.0	4.7	2.0 - 7.5
biological oxygen demand mg/l)	0.7	1.1	0.3	
total nitrogen (mg/l)	0.1	0.21	.05	0.1 - 1.0
total phosphorous (mg/l)	0.008	0.018	0.002	0.02 – 0.09

Figure 8: Water Quality Sampling Sites in Kampot Bay and near Kep



2. Protected Areas

58. There are two ecological protected areas in Kampot and Kep provinces in the vicinity of the subproject areas (Figure 9). Bokor National Park in Kampot is located approximately 25 km northwest of Kampot. Kep National Park is located 2 km east of the coastal urban crab market.

59. The important bird areas (IBA)¹¹ in the region are located inside the two national parks and away from the subproject areas (Figure 10). There are no rare or endangered terrestrial wildlife in the subproject areas.

¹¹<http://birdlifeindochina.org/datazone/14>

Figure 9: Location of Bokor and Kep National Parks near Subprojects.

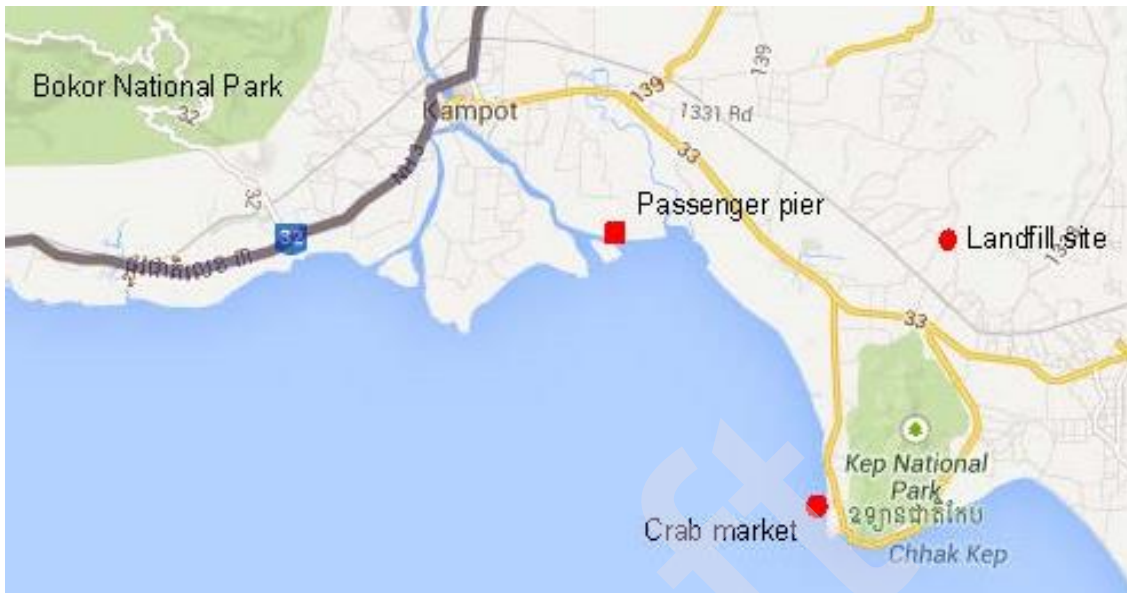
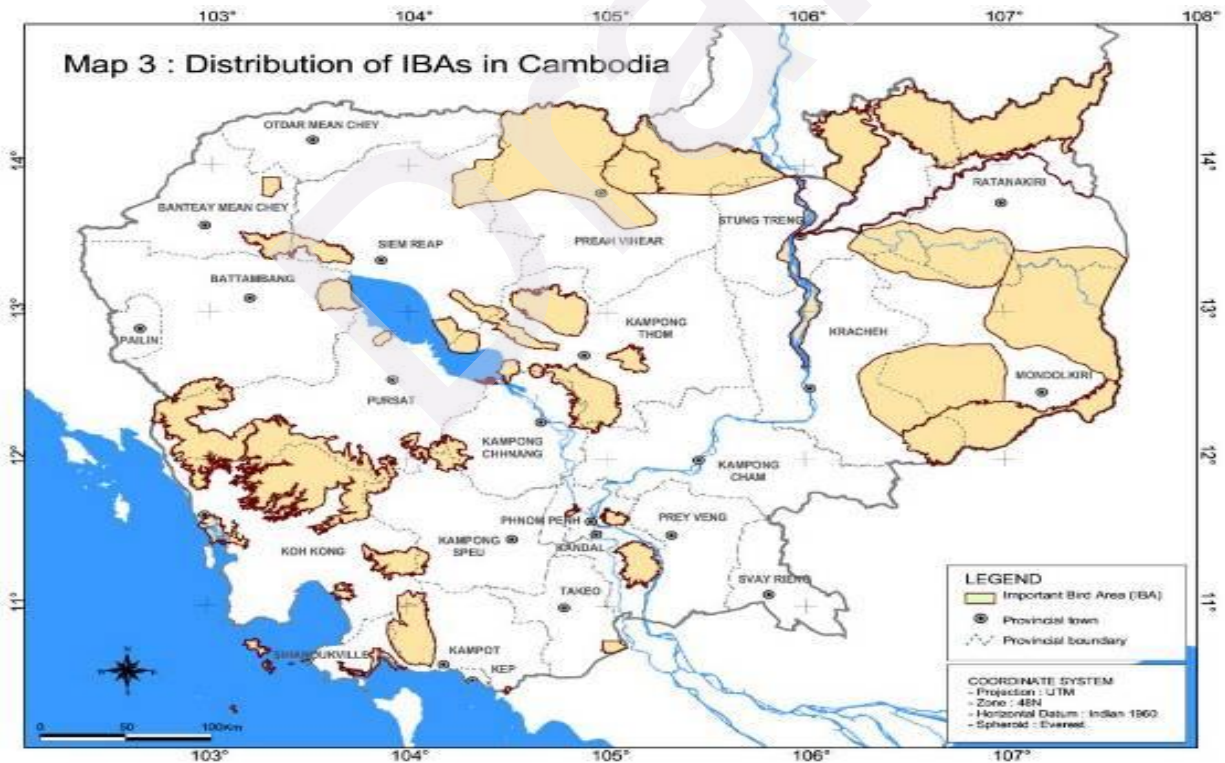


Figure 10. Important Bird Areas in National Parks North of Kampot and Kep Towns



3. Marine Coastal Zone of Kampot and Kep

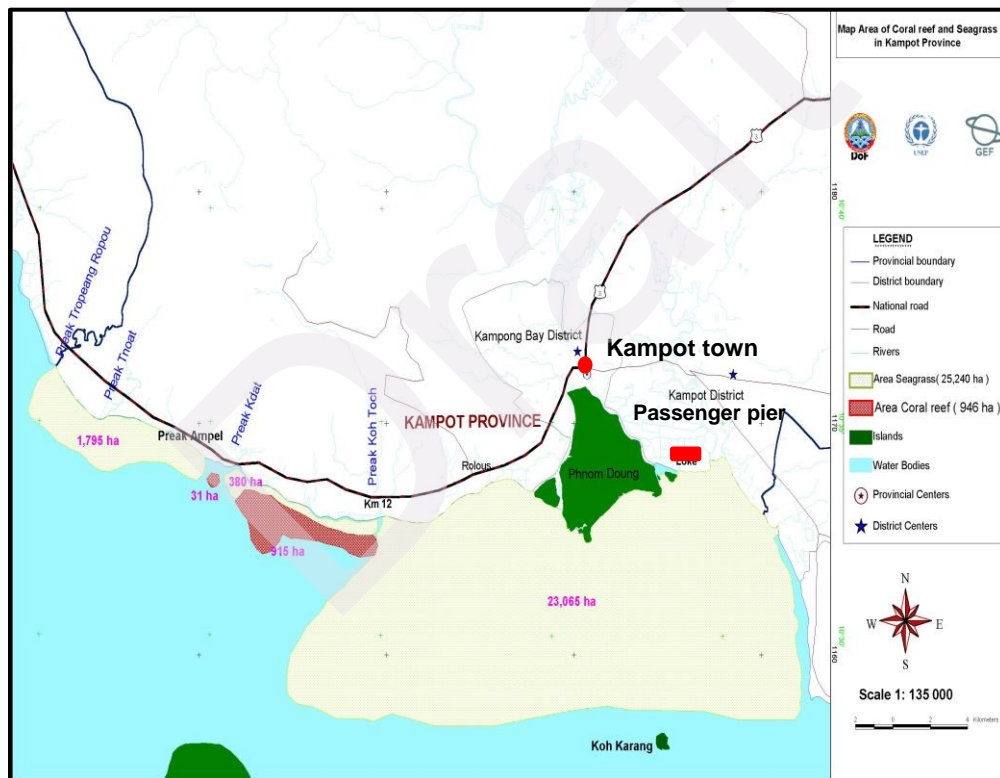
60. Kampot and Kep along with the provinces of Koh Kong and Sihanoukville form Cambodia's coastal zone along the Gulf of Thailand. Cambodia's coastal resources play an

important role in the country's development by supporting the fisheries, aquaculture, agriculture and tourism sectors. Of particular importance are the role of mangroves, seagrass, and corals in the fisheries and tourism industries.

a. Seagrass

61. Cambodia's coastal zone supports one of the world's largest areas of seagrass habitat in the shallow nearshore zone.¹² This critical habitat provides rich reproductive, nursery, and feeding habitat for many different species including rare and endangered species such as the Dugong marine mammal, sea turtles, seahorses, and an array of finfish and shellfish. The defined seagrass beds of Kampot and Kep with particular reference to the estimated 25,420 ha seagrass off Kampot is also critical habitat for inshore and offshore fisheries (Figure 11 and Figure 12).

Figure 11: Coral Reefs and Seagrass in Coastal Zone of Kampot.



a. Coral Reefs

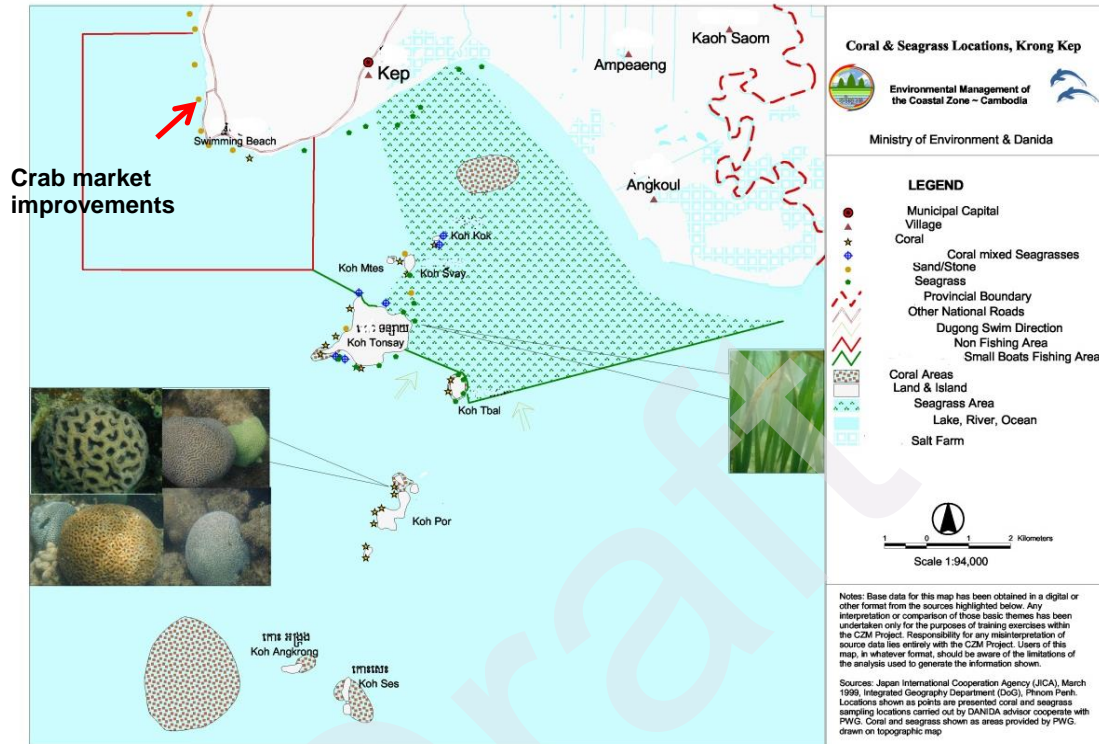
62. Cambodia supports an estimated 2,700ha of coral reefs with the most extensive coverage occurring in Kampot and Sihanoukville¹³ with coral also found off Kep. Approximately 70 coral species are found within the coastal zone, though little is known about the relative distribution and composition of the reefs. These reefs are threatened by

¹² UNEP 2009.

¹³ See footnote 13

development, overfishing, coral harvesting degradation of the water quality, and destructive fishing practices such as dynamite.

Figure 12: Seagrass Beds and Coral Areas of Kep. Note Dugong Migration Route.



63. There are indications that seagrass habitat is being lost to degraded water quality from increased turbidity caused by forest clearing, shoreline infilling, sand dredging. The Fisheries Administration of MAFF has produced a National Action Plan for Coral Reef and Seagrass Management in Cambodia (2006-2015).¹⁴

b. Mangroves Forests

64. The area of mangrove forests along the coastline of Cambodia has declined significantly over the last two decades. However, the estimated 56,000 ha that remains represents a rich resource and area of critical habitat in relation to other areas in Southeast Asia. Koh Kong province supports the largest area of mangroves. Similar to seagrass, mangrove forests are critical habitat and play an essential role in the lifecycle of many marine organisms, and provide spawning or nursery grounds that support the rich biodiversity of fish species which include commercially important species. The mangroves forests of Koh Kong provide habitat for two rare and endangered species of otter: the smooth-coated and the hairy-nosed otters.

65. Dense mangrove forests grow along the west bank of the Teuk Chuu River south of Kampot, and extend west along the coastline around and beyond the Phnom Dong headland (Figure 13). Mangroves also exist east of Kep town.

¹⁴ MAFF, 2006. 'National Action Plan for Coral Reef and Seagrass Management', 2006-2015.

66. Mangroves also play an essential role in protecting the coastline and provide an effective buffer against climate change-related sea level rise, cyclonic activity and storm surges. Mangrove loss is due to shoreline infilling and development, illegal harvesting for fire wood and charcoal, and shrimp aquaculture among other uses. Mangroves are reported to be further damaged and degraded by off shore and estuaries and dredging.

c. Marine Fisheries

67. Estimates¹⁵ of the average annual catch of fish in Kampot province is between 7,000-8,000 tones, and over 450 tones in Kep. There has been a shift from smaller to bigger boats away from the inshore fishery. While overall fish catch has been increasing since about 1980 due to the increase in marine fishermen and industrial-scale technologies, fish catch per unit has been steadily declining, principally due to an increasing coastal population and unrestricted development in ecologically-sensitive habitats.

68. Early estimates indicated that there were over 416 motorized fishing boats in Kampot which will have increased significantly to date. The common groups of fishes caught include fishes, shrimps, and octopus. Coastal fishing communities may be boosted following the advent of Community Fishing Area Management Plans (CFAMP)¹⁶ along the coastline. The plans detail activities and goals for improved resource management and community development but currently suffer a lack of a baseline understanding of current resources.

4. Land Use at Subproject Sites

69. Land use in Kampot and Kep province ranges broadly from small and large settlement areas such as Kampot town to barren areas commonly seen as such rock outcrops. Dense broad leafed forest is found within the Bokor Mountain National Park in the eastern part of the province. On the flatter coastal plain areas including Kampot and Kep towns rice paddy and salt farms predominate.

a. Passenger Pier at Kampot

70. The land adjacent and north of the site for the passenger pier on the east bank of the Teuk Chuu River and along the access road is dominated by salt farms that are fringed with scrub vegetation (Figure 13). Other agriculture in the area includes rice, fruit, and vegetables.

71. The mangroves that once lined the east bank of the river were removed by a land developer before 2005. Whereas, dense mangrove forests still exist directly across the river from the pier site. Much of the mangroves located on the west bank of the river including the small island between the existing boat channels from the river out to Kampot bay were replanted by an earlier AusAid-funded project (Figure 13).

72. The current channel used by boat traffic in/out of the river shown in Figure 13 was identified by the Director of the Fisheries Administration of MAFF in Kampot. The bifurcated

¹⁵ MOE and Danida, 2002. State of Environment Report for Kampot

¹⁶ The CFAMPs developed collaboratively by Fisheries Authority and communes. SorSarin, DAF pers comm. 2013

boat channel depicted in Figure 13 is consistent with observations during preparation of the project.

Figure 13: Boat Channel (blue) and Seagrass and Mangrove Areas (green)



73. Figure 13 also shows the existing 300 ha seagrass conservation area just east of the mouth of the Teuk Chuu River, and the seagrass areas west of the river mouth that were demarcated with existing concrete piling markers with earlier AusAid funding. There are plans to designate the seagrass west of the river as conservation zones similar to the existing eastern conservation zone.¹⁷ These inshore sea grasses form part of the massive coastal seagrass area shown in Figure 11.

74. Figure 14 shows the denuded shoreline on the east bank of the Teuk Chuu River where the passenger pier will be built. The mangrove restoration project funded by AusAid is shown on the opposing shore in the background. East of the pier site (Figure 14) there are scattered mangroves left behind after the shoreline was cleared before 2005. These mangroves will be incorporated into the design of the pier facility with minimal removal to provide an interpretive-awareness raising demonstration of the importance of mangroves for tourists who use the pier. The access road runs along the river before veering north east through salt fields and small agriculture to meet the main road into Kampot town.

Figure 14: Passenger Pier Site on East Bank of Teuk Chuu River and Access Road.

¹⁷ Pers Comm. Mr. SorSarin, Director of Fisheries Administration, Kampot



75. **Other Development Activities.** There are no other ongoing development activities, or known development plans south of Kampot to the site for the passenger pier. The only existing activities along the access road to the pier from the main highway are salt farming and homestead agriculture of rice, fruits and vegetables. To the west along the coast towards Sihanoukville the next major development is the Kampot international cargo port.

b. Crab Market Area

76. The crab market area is situated in a typical small urban seaside setting (Figure 15). Land use near the market is a combination of small commercial spaces, restaurants, small hotels, beach activities, and houses. A shoreline road with seawall with groomed trees, shrubs, and gardens extend from the market.

Figure 15: Crab Market and Adjacent Shoreline Road



77. **Other Development Activities.** Urban and tourist development in the crab market area in Kep continues to evolve at the level of the individual restaurant or crab shop. The municipality is in the process of improving the coastal rim of the town with ongoing construction of a coastal road and seawall with landscaped promenade. The small tourist strip of beach hotels southeast

of the crab market is expected to continue to expand. Industrial or large scale urban development in Kep town is no present.

5. Quality and reliability of information and data

78. The availability of information and data on the affected subproject environments in Kampot and Kep varied among subproject components. The published data and information on the coastal resources in nearshore Kampot bay was good which also was corroborated by local environment agencies such as the fisheries section of MAFF and the DOE. Observations and information obtained from the social surveys provided a good understanding of affected social and natural environments along the access road to the future passenger pier. The available data and information on affected environments provided a good basis for the IEE.

79. Understanding of affected natural and social environments in Kep was compiled from published accounts such as the latest State of Environment Report for the province,¹⁸ extensive observations, and discussions with provincial environment agencies. The literature on the coastal resources of Kampot included Kep due to the juxtaposition of the two coastal provinces. The existence and scope of potential future development plans for Kep town are not clear as the town lacks an urban development plan.

V. PUBLIC CONSULTATION

80. The stakeholder consultation strategy during project preparation embodied the principles of meaningful engagement, transparency, participation, and inclusiveness to ensure that affected and marginalized groups such as women and the poor were given equal opportunities to participate in the design of the project, in accordance with the requirements ADB's *Safeguard Policy Statement* (2009). Stakeholder consultation for the environment built upon the parallel social impact assessment of the various subprojects.

81. The approach to stakeholder consultation for environmental concerns or issues associated with the Kampot and Kep subprojects consisted of the following three avenues of inquiry and data collection:

- 1) As part of the household and village leader interviews conducted by the social development team;
- 2) Separate group consultations with provincial agencies and other stakeholders by social development team and an additional environmental research assistant hired during the interim mission; and
- 3) Individual interviews conducted by the International Environment Specialist with provincial and national environmental management agencies.

A. Identification of Stakeholders

82. Stakeholders were identified and engaged in a participatory manner. Stakeholder communication to date has focused on institutional stakeholders, affected communities, and persons directly affected by proposed subproject interventions. The stakeholders involved in the design of the project include:

¹⁸ Footnote 6.

- Institutional stakeholders including the (i) project EA and PIUs (ii) provincial and national agencies; private sector groups, chambers of commerce and potential participants in private public partnerships (PPP);
- The Department of Women’s Affairs also provided information on the design of the various subproject activities, and may continue to provide insights for implementation of subproject activities. The World Wildlife Fund (WWF) was consulted separately about the project in a meeting in Phnom Penh.¹⁹ WWF is not operating in the project area, but was positive and supported both subprojects in Kep and Kampot. The Children and Women’s Development Centre (CWDC) was also consulted separately in Kampot. See Appendix B for the potential role of CWDC with mangrove restoration;
- Communities living along the subproject areas who will benefit from the project, and who have an interest in identifying measures to enhance or maximize the benefits;
- Communities within the subproject area who may be directly and/or adversely affected, and who have an interest in the identification and implementation of measures to avoid or minimize negative impacts;
- Vulnerable and/or marginalized groups who have an interest in the identification and implementation of measures that support and promote their involvement and participation in the project; and
- Other institutions or individuals with a vested interest in the outcomes and/or impacts of the project.

B. Discussion Guide

83. Five questions and information requests (Table 6) were posed to stakeholders to guide discussions of the individual and grouped stakeholders.

Table 6: Guiding Questions and Information Requests for Stakeholder Consultations

<p>1. What will be the benefits of the subproject? Please list benefits of project.</p> <p>2. Do you have any environmental concerns with the subproject? Please list environmental concerns of project.</p> <p>3. Do you any have environmental concerns with the construction activities of the subproject? Please list environmental concerns of construction phase activities.</p> <p>4. Do you have environmental concerns with the completed operation phase of the completed subproject? Please list environmental concerns of the operation of completed subproject.</p> <p>5. Do you think the subproject design or operation should be changed to prevent negative environmental, or community impacts? Please list changes to subproject that you think will prevent or reduce negative environmental, or community impacts?</p>

¹⁹ Mr. ThibeaultLedecq, WWF-Cambodia, Phom Penh 18/11/13

84. To help orient the discussions on environmental issues and concerns of subprojects a list of environmental components (Table 7) was introduced to the stakeholders ahead of the question and answer period. The stakeholders were encouraged to add their own components of environment to the discussions.

Table 7: Example Environmental Components Used to Guide Stakeholder Discussions.

<ul style="list-style-type: none"> • drinking water quality and availability • surface water quality and quantity • groundwater quality and quantity • air quality • climate • land and soil quality • coastal zone, ocean, rivers, reservoirs, • mangroves, trees, other vegetation, • coastal and terrestrial resources e.g., seagrass beds, mangroves, forests, salt beds 	<ul style="list-style-type: none"> • terrestrial and aquatic animals, e.g., fish, birds, small mammals • ecological protected areas (e.g., national parks, wildlife sanctuaries), • land and coastal zone uses (e.g., agriculture, fisheries, forestry, navigation, aquaculture, commercial, other), • public safety • public movement and access • physical cultural values (e.g., pagodas, cemeteries, monuments)
---	---

C. Summary of Public Consultation

85. The stakeholder consultations showed overall positive support for the project and its subprojects in both provinces. Table 8 and Table 9 summarize the comments and concerns of (i) individual households (ii) village heads and (iii) district, provincial and private sector stakeholders that were consulted in focus groups lead by national discussion leaders. The tables also present a summary of interviews with provincial environment agencies conducted by the International Environment Specialist.

86. Also summarized in Tables 8 and 9 is how the EMPs for Kampot and Kep will respond to the environmental issues and concerns that were raised by stakeholders. The follow-up stakeholder consultations that may be required during the detailed design phase will begin with a review of the issues and mitigations initially identified by the stakeholders.

Table 8: Summary of Stakeholder Views of the Passenger Pier Development in Kampot

Benefits of passenger pier expressed by stakeholders	<ul style="list-style-type: none"> • Attract more tourists and increase income of local people through tourism supported business such as restaurant, accommodation and transportation; • Upgrade the existing road, and gain new road; • Reduce travel time along the proposed road; • Support urban planning program; • Improve the channel for better navigation; • Improve the drainage system along the river bank; • New water supply to the proposed pier; • New electric reticulation to the proposed pier; • Support the development plan of the province of Kampot; and • Contribute to the GDP growth of Cambodia 	
	Project Response²⁰	
Construction phase issues	<ul style="list-style-type: none"> • Loss of seagrass and mangroves, and therefore biodiversity; • Loss of fishing grounds • Waste from the construction material; • Dust and noise from the construction 	<ul style="list-style-type: none"> • The EMP for Kampot specifies requirements of boats to use only the existing channel out and beyond conservation seagrass beds and inshore fishing grounds in Kampot

²⁰ Views of stakeholders are addressed in EMPs

	<p>activities; and</p> <ul style="list-style-type: none"> • Disturbance to the navigation during the construction 	<p>Bay.</p> <ul style="list-style-type: none"> • Specific mitigation sub-plans of EMP will address noise and dust from construction. • A specific mitigation sub-plan in EMP will prescribe no-disruption of existing boat traffic during construction phase.
Operational phase issues	<ul style="list-style-type: none"> • Independent “side effect” development along coast line resulting in expanded loss of coastal resources and wildlife habitat; • More people, more waste with limited waste management system; • Water quality due to limited waste management; • Small concerns with the air quality due to dust. More people, more waste with limited waste management system; • Water quality due to limited waste management; and • Small concerns with the air quality due to dust. 	<ul style="list-style-type: none"> • The east bank of Teuk Chuu river alternate site minimizes potential impacts of induced development along adjacent shoreline. • Pier facility management includes formal solid and liquid waste systems to protect quality of land and Teuk Chuu River. • The completed concrete road upgrade and pier facility area will be designed without large dirt/gravel surfaces to prevent dust generation.
Suggested impact mitigation measures	<ul style="list-style-type: none"> • Liquid and solid waste management system at the pier should be done in order to minimize the environmental impacts; • Keep the existing vegetation along the river bank as possible or plant more if not exist; • Standard construction management on both safety and environment; • Minimize the impact on water flow for salt fields; and • Human resources development on the operation and management of the passenger pier. • Compensate fisherman if there are lost fishing grounds (fishing income and livelihoods) 	<ul style="list-style-type: none"> • The design of the pier facility, and associated impact mitigations of EMP will address solid and liquid waste concerns. • Passenger pier site selected in part to prevent any lateral mangrove loss. • Access road upgrades and bridging, and new pier facility will be designed to maintain existing flow to/from salt farms. • Government and World Bank EHS (2007) construction guidelines for worker and public safety will be employed • Specific mitigation sub-plans will be developed where necessary for the impacts associated with the mitigations. • Compensation for property or livelihood losses will be prescribed as needed in separate social safeguard documents • Human resource development for operation of the pier is an explicit component of the separate Output 3 the project.

Table 9: Stakeholder Views of Kep Environmental Improvements

<p>Benefits of crab market improvements,</p>	<ul style="list-style-type: none"> • Good environment can attract more tourist and increase income of local people through tourism supported business such as restaurant, accommodation and transportation; • Improve the hygiene for tourists; • Improve the ecology of the coastal zone of Kep; • Support urban planning program; • Support the development plan of the province of Kep; and • Contribute to the GDP growth of Cambodia; • Increase household income; • Improve sanitation and environment; • Improve people’s health; • Increase job opportunity; • Attract more tourists. 	
		<p>Project Response</p>
<p>Construction Phase Issues</p>	<ul style="list-style-type: none"> • Construction material waste from crab market discharged to the sea; • Dust and noise from the construction activities; and • Disturbance to the daily business in the crab market. • The construction phase at the crab market may disturb the business of the seller in the crab market 	<ul style="list-style-type: none"> • Specific mitigation sub-plans of Kep EMP will address noise and dust from construction. • EMP will prescribe for procedures to collect and dispose construction waste. • EMP will prescribe a formal crab market community meeting ahead of construction to clarify a plan to minimize disturbance from construction activities. • Grievance Redress Mechanism of EMP will also provide means for community to voice concerns during construction phase.
<p>Operational Phase Issues</p>	<ul style="list-style-type: none"> • Smell and noise of the waste water treatment; and • Management of the waste water treatment plant. 	<ul style="list-style-type: none"> • Design and operation of ABR septic and infiltration field system. Operation of ABR will be monitored as part of EMP.
<p>Suggested Impact Mitigation Measures</p>	<ul style="list-style-type: none"> • Temporary places for crab market sellers should be found in order to maintain their business if required; • Manage the waste and noise during the development at crab market; • Strongly suggest recycling the treated water to use for watering the garden or other purposes (not for drinking) rather than release to the sea since the water resource is limited in Kep; and • Human resources development for the operation and management of the waste water treatment plant (ABR system). 	<ul style="list-style-type: none"> • Where needed, temporary locations will be provided for existing sellers/stalls. • Mitigation of noise and waste will be addressed through management plan for improved crab market. • Treated effluent of ABR infiltration system will exceed Government industrial effluent discharge standards.

VI. POTENTIAL ENVIRONMENTAL IMPACTS AND MITIGATIONS

87. The assessment of potential impacts of the subprojects in Kampot and Kep provinces is structured by the primary infrastructure developments as defined by:

- New passenger pier facilities and access road upgrades; and
- Crab market environmental improvements including new ABR waste treatment system.

88. The impact assessment was stratified by major subproject component not by province because the potential impacts of the different infrastructure types are generally similar. The provincial-specific aspects of potential impacts can be highlighted with minimal repetition of the assessment.

A. Subproject Benefits

1. Passenger Pier and Facilities

89. The new passenger pier will increase tourism in the area, and develop the local and ultimately the regional economies of Kampot and environs as identified by the stakeholders in Table 8. The new passenger pier facility could also enable consolidation the existing small cargo port just south of Kampot there by providing increased tourist and cargo access to Kampot and the area. By using the new pier, the existing small cargo fleet would have year-round - 24hr access to the port and will not have to continue with the current practice of off-loading cargo downstream during low tide or dry season conditions. The existing cargo pier will not be closed.

90. It is estimated the pier and associated facilities will create 2,500 tourism-related jobs²¹ through expanded land and sea transportation services, customs and immigration facilities, and expansion of other tourism services in Kampot. Residents of the commune Chum Kraal with a population of 5,282 will benefit from new tourism-related economic opportunities. The salt farmers that live along the access road will benefit from more affordable and reliable transportation options.

2. Crab Market Environmental Improvements

91. The environmental improvements at the crab market will significantly increase the quality of the beach area by ending the current practice of discharging raw sewage from the market and food stalls to the beach area. This in turn will improve water quality for the nearshore cage storage areas for crab for the market and improve the overall aesthetics of the area for tourism development. The project will improve sanitation and environmental conditions for the 33shops/restaurants and 300 mobile vendors presently operating at the crab market, and is expected benefit upwards of 12,700 people living in the area adjacent to the market area.

B. Subproject Impacts and Mitigations

92. The assessment of potential negative impacts of the primary infrastructure developments is structured starting with the pre-construction preparation phase, followed by the

²¹ Quantified beneficiaries of subproject sites are consultants estimated reviewed by ADB.

construction phase, and ending with the post-construction operation phase of the commissioned infrastructure developments. This assessment structure is carried forward and is used to structure the environmental management plans (EMP) prepared for the subprojects.

1. Pre-construction Phase

93. Negative impacts associated with the pre-construction phase of the sub-projects concern land acquisition, resettlement, and temporary livelihood disruptions. At the feasibility stage approximately 28 household/businesses will likely be disrupted in the Kep market area during the construction phase. No resettlement is expected to be needed as a result of the new pier and upgraded access road at Kampot. The impacts and management actions are addressed in more detail in the Resettlement Plan for the subprojects prepared under separate cover.

a. Local soils and groundwater study at crab market

94. The depth and quality of the groundwater, and the soil type at the crab market are not well understood. Critical for the design and operation of the ABR septic system and infiltration gallery is a good understanding of the soil type, water table depth, and groundwater quality. A local groundwater and soils investigation will be needed during the pre-construction-detailed design phase.

b. Updating EMPs

95. The EMPs for the Kampot and Kep subprojects will need to be updated during the pre-construction detailed design stage to ensure the EMPs meet the final detailed design requirements of the subprojects. This will involve finalization of the mitigation sub-plans to manage potential impact areas such erosion, sedimentation of surface waters, noise, dust and air quality, spoil disposal, traffic, and worker and public safety at the project sites. The impact mitigations of the pre-construction phase are detailed in the EMPs for the subprojects which are prepared under separate cover.

96. Key impact mitigation measures of the pre-construction phase are:

- 1) Initiation of the project's resettlement plan;
- 2) Groundwater and soils investigation at crab market;
- 3) Completion of detailed designs of the subprojects; and
- 4) Updating and initiation of the EMPs.

97. Updating the EMPs also involves updating the environmental baseline descriptions of affected areas where needed to better understand potential impacts of subprojects and to maximize their effectiveness.

2. Construction Phase

a. Common potential impacts of subprojects

98. The potential environmental impacts of the subprojects in Kampot and Kep are mainly the construction phase-disturbances of the individual subproject components. Common impacts of the civil works will consist of for example, reduced and/or blocked public access, disrupted business and recreation, noise, dust and air pollution from NO_x, SO_x, and CO caused by

increased truck traffic and heavy equipment use, soil and surface water pollution caused by equipment operation and maintenance, public and worker accidents, increased traffic accidents, land erosion and surface water sedimentation, drainage and flooding problems, solid waste and domestic pollution from worker camps, communicable disease and community problems caused by migrant workers. These short-term impacts will occur at different levels of magnitude depending on the civil works activity and the subproject site.

i. Common mitigation measures

99. Management measures to mitigate potential common impacts associated with the construction phase of the infrastructure developments are presented below. The mitigation measures are detailed further in the EMPs.

1. Care must be taken to ensure that sites for earthworks (e.g., excavations, trenches) that are suspected to have unexploded ordnance (UXO) should be surveyed by the Government prior to construction. If such ordnance is detected clearing work will need to be commissioned prior to undertaking civil works.
2. Open excavations should be fenced, and trenches covered where public walkways or vehicles must cross.
3. A cultural chance find management plan must be in place for cultural artifacts and property.
4. Regular use of wetting agents should be employed at construction sites to minimize dust.
5. All construction vehicles and equipment should be maintained in proper working order, and not operated at night if possible to minimize noise.
6. Speed limits should be posted and adhered to by construction vehicles.
7. Where possible construction vehicles should use different roads or dedicated lanes of roads shared by the public.
8. Trees and other vegetation at all construction sites and along road corridors should be protected, and not removed from anywhere near Kep National Park.
9. Present and past land use should be reviewed to assess whether excavated soils are contaminated. Contaminated spoil should be disposed at the existing landfills for Kampot and Kep, or locations approved by DOE.
10. Berms and/or silt curtains should be constructed around all excavation/trench sites and along all surface waters to prevent soil erosion and surface water sedimentation.
11. Local workers should be used as much as possible to prevent or minimize influx of migrant workers, and incidence of social disease and community unrest.
12. Worker camps must have adequate domestic waste collection facilities and sufficient pit latrines that are located away from public areas and surface waters.
13. Dedicated fuel storage areas must be established away from public areas and marked clearly.
14. To minimize the impact of construction on the public and workers the recent Cambodia Occupational, Health, and Safety (OHS) Programme guidelines developed for Cambodia by the International Labour Organization (ILO) should be followed. The IFC World Bank Environment, Health, and Safety Guidelines (2007) cited above should be followed to supplement the OHS if necessary.
15. Aggregates (e.g., sand, gravel, rock) that are transported by truck should be covered.
16. Prolonged use of temporary storage piles should be avoided, or covered, or wetted regularly to prevent dust and erosion.
17. Sand extraction in rivers for road embankment fill should be done at licensed areas only.

18. Storage of bulk fuel should be on covered concrete pads away from the public and worker camp. Fuel storage areas and tanks must be clearly marked, protected and lighted. Contractors should be required to have an emergency plan to handle fuel and oil spillage.

b. Subproject-specific Construction Impacts and Mitigations

i. Passenger pier facility

Surface water quality

100. The construction of the passenger pier, associated buildings, and car park could cause siltation to the Teuk Chuu River which would degrade water quality and impede local uses of the river. The available data on suspended solids in the river (Table 5) indicate that ambient TSS levels are low. Aquatic biota of the river would also be negatively affected as would local fishing activities. Construction waste can also end up in the river. Extra care should be taken with the construction of temporary shoreline berms or placement of in situ silt curtains parallel to the shoreline to isolate construction areas as much as possible to protect the river. Silt curtains placed parallel to the shore (and current) can restrict siltation from civil works at the shoreline. Such curtains have been used in strong-current situations such as in the tidal area of Chai Bay for the CaiLan Port in Quang Ninh, Viet Nam.

101. Construction of the pier and lateral embankments should occur during the dry season thereby reducing the exposure of the low-flow state of river to construction activities. Clearly defined management and rules for not disposing any construction waste into Teuk Chuu River should be developed and implemented by contractors.

102. Similarly, upgrades to the access road to the pier facility should occur during the dry season. Construction vehicle traffic should stay within the existing alignment as much as possible to prevent unnecessary lateral erosion where possible. Temporary berms or plastic fencing should be placed between the access road and the river to prevent erosion. Similar erosion barriers should be installed to protect salt farms and all other land uses along the access road.

Mangrove removal and restoration

103. Some of the mangroves that are scattered on the pier site east of the Teuk Chuu River will be removed for pier facilities, notwithstanding the design of the pier facility which includes a central mangrove interpretive area to demonstrate the importance of mangroves to the coastal ecosystem. The loss of these mangroves will be offset by the project support that will be given to the ongoing mangrove restoration activities of the Children and Women Development Centre (CWDC) that is occurring along the coast of Cambodia²².

Road and river traffic disruption

104. The upgrades to the access road and construction of the pier will disrupt road and boat traffic and increase the risk of traffic accidents on both transportation routes. Careful review of existing traffic along each medium of transport will be conducted to develop a construction

²² See Appendix B for activities of the CDWC and support from project

vehicles traffic management plan to ensure civil works and excavation equipment does not interfere with ongoing traffic flow. Special speed limits for all traffic should be posted and enforced in the river and along access road. Along-shore dedicated lanes for pier construction-related boat activity will be specified, and truck traffic lanes along access road will be specified where possible.

ii. Crab market environmental improvements

Coastal zone and water quality

105. The civil works and construction activities of the urban improvements could cause soil erosion to the beach and coastal areas if not contained effectively. Such erosion would negatively affect water quality and inshore aquatic habitat. The excavations for the placement of ABR septic tanks should be conducted to ensure excavated soil is carried offsite to DOE-approved disposal areas. Piles of soil should not be left uncovered and wetted regularly to prevent erosion. Of particular concern is the inshore area adjacent to the crab market where crabs are stored in cages for the market. The beach and coastal areas should be physically separated from all civil works and construction activities with temporary berms or plastic fencing.

106. A potential significant issue with the ABR septic system is the availability of sufficient land and soil depth in the crab market area to allow complete passive treatment of waste by the gallery infiltration field-phase of the ABR system. The area required for the gallery infiltration field will need to be determined during detailed design phase when the existing sandy soil type is clarified, and permeability in the market area is assessed in light of the anticipated volume /day of wastewater that needs to be treated.

107. The infiltration gallery of the ABR must be located to not contaminate local groundwater, and local wells. As introduced above an important activity of the detailed design phase is a study of the local water table depth, quality of groundwater, location of domestic wells, and soil quality in the crab market area. If the soil type, and groundwater characteristics including proximity of domestic wells are not appropriate for the ABR system, the design will have to shift to a holding tank option for crab market waste (see para 43). Waste will be pumped regularly from the tank and disposed off-site in a DOE-approved location.

Disruption of Commercial Activity

108. The upgrading the crab market will require merchants to either temporarily move or suspend their business activities. Compensation and entitlements are outlined in the resettlement plan.

Mangrove and Seagrass Habitat

109. There are mangrove forests and seagrass east of Kep town toward the eastern provincial boundary with Kampot. While the mangroves and seagrass should be distant enough from all urban improvement activities care should be taken to ensure that all civil works and construction activities avoid this critical coastal habitat.

iii. All subproject components

Protected Areas, Rare and Endangered Species, and Cultural Property and Values

110. There are no known rare or endangered terrestrial wildlife species or critical habitat in the immediate vicinity of the subprojects in Kampot and Kep. And, as indicated in Figure 9, the subprojects are not near the national parks of Bokor and Kep. Thus, the construction phase activities that are implemented along with specified mitigation measures should not negatively affect these sensitive ecosystem components.

111. Similarly, there no known rare or endangered marine or freshwater wildlife species, or critical habitat at the immediate passenger pier site on the east side of the Teuk Chuu River. The highly valued mangroves forests are located across the river on opposite riverbank. The rare or endangered marine wildlife including seagrass beds and conservation areas are located below the mouth of the Teuk Chuu River in nearshore Kampot bay.

112. However, while the selected subproject sites are not expected to change, the precise and final locations of facilities and components of the subprojects will be determined at the detailed design phase. Thus, the potential exists for nearby valued ecological and cultural resources to be negatively affected should subproject locations and components be altered significantly at detailed design. Therefore, as part of the detailed design stage when subproject siting is finalized, and when the EMP is updated to meet the detailed designs, a review of the proximity and sensitivity of all valued eco-cultural resources of the subproject areas (e.g., seagrass beds, mangrove forests) in relation to finalized infrastructure developments should be undertaken.

3. Operation Phase

a. Passenger Pier Facility and Access Road

i. Seagrass beds and mangrove forests

113. The operation of the new passenger pier for tourist boats combined with the present fishing boat and expected increased cargo boat activity in the Teuk Chuu River will result in an overall increase in boat traffic to and from the mouth of the river through the existing seagrass beds of inshore Kampot Bay. The increased boat traffic could damage the seagrass beds and mangrove forests that are located adjacent to the existing scoured boat channel that extends out to deeper Kampot bay above the seagrass beds and away from the mangroves.

114. Potential damage or destruction would arise from:

1. the existing boat channel being widened due to greater number of boats trying to use channel, thereby destroying adjacent seagrass beds and mangroves;
2. larger boats using the passenger pier which necessitates channel dredging and widening;²³ and
3. increased inshore discharge of oil and gas and other waste from the greater number and size of boats using the passenger pier.

ii. Water quality

115. The increased boat activity may negatively affect the water quality in the Teuk Chuu River and inshore Kampot bay from the potential associated increase in the discharge/spills of

²³ The depth of the channel ranges from approximately 2-3 meters at low water.

oil, gasoline, and solid waste from the boats. Water quality can also be degraded from solid and domestic liquid waste from tourist boats, and from the operation of pier facilities.

iii. Aquatic biota, biodiversity, and rare and endangered species

116. The development of the passenger pier facility on the east bank of the Teuk Chuur River will cause the least ecological damage of the three alternative sites investigated (see Analysis of Alternatives below) because minimal critical habitat, i.e., mangrove forests and seagrass will be affected by the immediate footprint of the pier and associated facilities. However, there are potential indirect impacts of the pier facility.

117. The potential effects of degraded water quality, widened or new boat channels to/from the river, and the physical disturbance created by the increased boat traffic in the area could destroy and reduce the area of seagrass in the area. This would lead to a reduction in the biodiversity and the inshore and offshore fisheries that are dependent on this valuable habitat. The existing rare and endangered species that depend on seagrass will also be negatively affected.

118. The area of seagrass in nearshore Kampot bay is so uniquely large, and therefore, extremely valuable habitat because the shallow inshore zone of the bay extends uncommonly far offshore exposing a great area to photo synthesis which produces the extensive seagrass bed. However, the shallowness of the area also makes the seagrass vulnerable to boat activity. Thus, there is a need to channel boats out to depths at which seagrass are not physically exposed.

119. There is a substantial literature on the damage boats and port activities inflict on seagrass beds or meadows. The damage from boats occurs from propeller scour, anchor chains, and permanent mooring installations, as well as from pollution. The potential “downstream” impacts of the operation of the passenger pier facility on the well documented sensitive inshore area of Kampot Bay must be prevented and mitigated carefully.

iv. Boat and vehicle traffic safety

120. The increased traffic of boats in the Teuk Chuu River and vehicle traffic along the upgraded access road to the pier complex will increase the risk of traffic accidents for both transportation modes. Disturbance from noise will increase along both routes with an increase of noise and dust along the access road, and increased noise in the river.

v. Upgraded road to passenger pier

121. The short-term impacts of the road upgrades are expected to be limited to impacts during construction phase as summarized above. The roads will have requisite drainage (which currently does not exist) and are not expected to cause impacts to the salt farms. The grade of the upgraded and new road sections will be higher than the adjacent salt fields, and will incorporate drainage culverts where necessary to maintain flow to and from the fields. No pollution from operation of the road is expected.

vi. Worker and public safety

122. The operation of the passenger pier facility will create a risk of worker and public safety injury caused by increased tourist traffic to/from of pier, and operation of pier facilities.

vii. Impact mitigations

123. The mitigations for potential impacts of the passenger pier in operation are summarized below. The mitigations are elaborated in the EMP for Kampot province which in turn will be updated during the detailed design phase to meet the detailed designs of the passenger pier and facilities. Mitigations for potential impacts of the operation of the passenger pier facility are summarized as follows:

1. Posted and enforced speed limits along upgraded access road to pier by DPWT.
2. Posted and enforced speeds on the river by DPWT that recognizes the different boat size, and frequency of the users of the river (e.g., fishermen, cargo boats, tourist boats)
3. The solid and domestic waste management systems developed for the pier facility must be used properly, and maintained in good working order.
4. All oil and gas, and boat maintenance supplies and equipment must be stored in proper containers in locked dedicated buildings away from the river and land.
5. Boat maintenance should be conducted on land in dedicated boat maintenance buildings if appropriate. Boat maintenance on the river should be conducted to ensure waste solid and liquid wastes such as oil, gas and paint is not discharged to the river.
6. All boats that use the pier must be maintained in good working condition and inspected regularly.
7. A navigation system is needed to ensure tourist boats and all other boat traffic in/out of the Teuk Chuu River navigate in well-marked dedicated boat channels or lanes out of the river that that traverses the nearshore seagrass beds in Kampot Bay.
8. The bathymetry of existing boat channel from the Teuk Chuu River into Kampot bay (Figure 13) needs to be reviewed carefully to clarify the width and length of the channels in the river and out to Kampot bay.
9. The existing near shore boat channel out to Kampot Bay which supports, minimal seagrass due to propeller scour, is not expected to need dredging because the channel is used at all times of the year by the existing navy installation which is located upriver from pier site²⁴
10. The location of seagrass beds and conservation areas along either side of the dedicated boat channels out into Kampot bay must be clearly market with floating signage.
11. All boat traffic must navigate within the dedicated channels, avoiding seagrass areas including the conservation area to the east of the channel and west of the channel into future seagrass conservation areas adjacent to the mangrove forests, along the coastline.
12. An enforced management plan is required that prevents discharge of solid and domestic waste from all boats into the river or Kampot Bay.

124. The twelve items listed above should be developed into a formal navigation management plan and procedures for the Teuk Chuu River–Kampot bay area. Of particular importance is that one or both of the existing channels through the seagrass beds (Figure 13) between Teuk Chuu river and Kampot bay are clearly and permanently demarcated with internationally accepted marine navigation buoys, and that the expected increase in total boat

²⁴ Communication with Navy base, June 2013.

traffic through the channel be strictly managed to keep boats away from the adjacent seagrass beds in the shallow nearshore area.

125. The bathymetry of the approximately 80-100m X 5km boat channels (Figure 13) should be surveyed to ascertain that sufficient depth at low tide exists for future boat drafts, and whether both channels will be needed to accommodate the expected boat traffic. The expected 10-14 tourist boats to/from the new passenger pier / day will join the existing 8-10 small coastal cargo boats and approximately 60-80 fishing boats that currently use the channel.

126. The navigation management plan must be developed collaboratively by marine resource management agencies (e.g., MAFF and MOE) and the agencies responsible for marine navigation and safety (e.g., DPWT, coast guard). All boat users of the river should be required to understand and follow the plan. The navigation management plan is included as part of the project and as such is included in project financing requisite capacity building for government agencies and boat operators.

b. Crab Market Environmental Improvements

i. ABR wastewater treatment system

Contamination of Environment and Community Impact

127. The ABR wastewater treatment system will provide a simple and potentially very effective technology for collecting, partially treating, and removing domestic waste from the crab market area. However, as indicated in the Analysis of Alternatives (section VII), the ABR system does not incorporate active waste treatment that is provided by conventional aerated lagoon-based plants or the high pressure treatment plant that were also considered but found unsuitable for the crab market.

128. The liquid phase of the wastewater that overflows the ABR tanks into the infiltration gallery is essentially raw sewage minus the solid phase which is left behind in the tank. Waste treatment of the ABR system relies on the post-ABR tank infiltration gallery to distribute the untreated liquid phase over a wide area to passively detoxify and become assimilated into the environment. Thus, the key attribute of the system is sufficient area for complete waste assimilation. A risk of using an ABR system is that the selected area for the gallery infiltration bed becomes too small, or worse, is too small at the outset due to the space constraints in the crab market area.

129. The crab market area could be exposed to periodic pollution events from sludge from the ABR tanks. This could arise if procedures to periodically pump the sludge from the ABR tanks into transport trucks for transport to the MOE-approved disposal site are not followed properly. Similarly, potential septage overflow events could occur if ABR tanks are not pumped out frequently enough.

Coastal and Well Water Quality

130. The ABR system and filtration gallery will underlie the parking area in the crab market where the liquid spillover phase of the ABR tanks will be distributed for assimilation into the environment. From above there is risk that over time, due to natural soil or slope properties, or possibly as a result of activities on the overlain parking area, that the infiltration area could stop

being able to completely assimilate the wastewater. For example, lateral leakage of the filtration gallery to the seashore of the crab market could occur, thereby degrading nearshore water quality, or contamination of groundwater and local well water supplies could develop. ABR tanks could become cracked and start leaking if the soils and foundations for the ABR tanks are not stable. Such leakage could also end up on the seashore and groundwater

131. Another risk of the ABR system is that it will not be maintained properly. The sludge from the ABR tanks must be removed regularly otherwise the system fails and aesthetic and human health pollution problems can be created. There is zero tolerance for large point source aesthetic pollution issues in the crab market tourist area.

132. Grease and fat must be intercepted before reaching the ABR tanks because those substances will clog and impeded the sorting and settling process in the tanks. It is thus proposed that grit, grease and oil traps are installed at each source. This arrangement might also form the basis for a tariff for periodic pickup and disposal of accumulated grease and oil by a private operator.

ii. Mitigations

133. The sandy soil depth, type, and permeability, slope, and slope stability of the parking area of the crab market needs to be assessed as part of the detailed design phase. This information is needed to determine the required area for the infiltration gallery that is needed to assimilate the expected volumes of waste that will be generated by the crab market area.

134. The ABR tanks must be emptied according to formal procedures, and maintained as required. The vehicles assigned to the collection and transport of the septage to the designated MOE-approved disposal site must be maintained operable. As indicated above a candidate septage disposal site for MOE approval at detailed design phase is the site that will be used for the sludge from the new ABR at the Kampot pier.

4. Induced and Cumulative Impacts

135. The goal of increasing tourism and associated socioeconomic development in the towns of Kampot and Kep is linked to potential negative direct and indirect impacts on the valued environmental components, community, and cultural physical resources that are the underpinning assets of tourism development. Potential induced and cumulative impacts of the subprojects are important factors that should be considered carefully. Example mechanisms of induced or cumulative impacts are introduced briefly below for the subprojects.

136. An example potential directly induced impact of an increased number of tourists in Kep town is increased pollution from solid and domestic waste outside project areas. More tourists result in greater consumption of goods and resources which can put greater strain on key amenities such as the cleanliness of local beaches, shore road parks and promenades. An increase in the number of tourists in Kep could lead to social issues stemming from the interaction of local and foreign cultures.

137. Similarly, the objective to increase the number of tourists that travel to Kampot town could overload existing solid and domestic wastewater management facilities leading to increased pollution and social issues. Moreover, as introduced above, the creation of boat traffic to and from the passenger pier and the overall increase at the mouth of the river of the Teuk

Chuu River and nearshore Kampot bay if not strictly controlled will lead to further damage of the seagrass beds and mangrove forests of Kampot Bay. The loss of seagrass and mangrove habitat will negatively affect the inshore and offshore fisheries, and important rare and endangered species such as the mammal sea cow *Dugondugon*, and the green turtle *Cheloniamydas*. The coastal zone of the provinces of Kampot and Kep together with Sihanoukville and Koh Kong form part of the last remaining pristine coastal zones in Southeast Asia that extend from Thailand east to Kien Giang province in Viet Nam.

138. A potential indirect induced effect of tourism development which is very difficult to prevent is lateral independent commercial and urban development that develops to serve and benefit from the tourism created by the project. The passenger pier in Kampot for example could easily become the seed for much greater and non-sustainable growth in both tourism and urban development along the coastline and interior of Kampot. Indirect induced tourism-socioeconomic growth is usually broader geographically and more difficult to manage with respect to impacts on environmental resources because of the different parties and interests involved.

139. The realization of the above and other unforeseen induced impacts of the project will be monitored to determine the overall impact of the project in Cambodia. The monitoring plan for direct potential impacts of Outputs 1 and 2 will consider these broader ranging impacts, together with monitoring activities implemented for the capacity development and training under Output 3 and 4; and by ADB. Lessons from past ADB tourism support in Cambodia, such as the need to develop suitable O&M mechanisms and involve local people in monitoring have been considered and incorporated into project design.

5. Climate Change

140. The design of the passenger pier facility in Kampot, and the designs of environmental improvements at the crab market at the feasibility stage are climate change resilient. The elevation of the passenger pier will be high enough to not be affected by flooding and storm surges. Similarly the ABR septic systems and infiltration fields will not be vulnerable to flooding and excessive runoff.

141. Conversely, the design of the passenger pier can also adapt to lower flows in the river resulting from reduced regional rainfall.

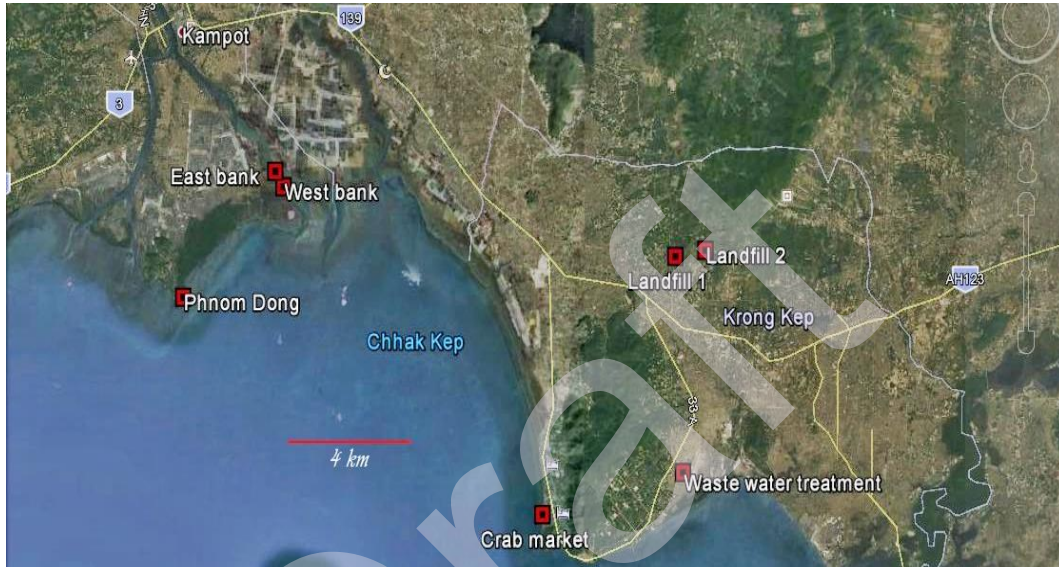
142. Consideration of climate change includes consideration of measures to reduce the contribution of the project to greenhouse gas production. Effort needs to be taken to reduce the carbon footprint of the project by ensuring that speed limits along the upgraded roads are enforced, and passenger and cargo boats that use the pier are maintained in good working order. All lighting installed at the passenger pier, along access roads, and in Kep town will use light bulbs that are energy efficient.

VII. ANALYSIS OF ALTERNATIVES

143. The initial selection of a long list of subprojects was conducted in accordance with the following criteria: (i) location in undeveloped segment of a GMS corridor; (ii) good tourism and economic development potential; (iii) investment has clear regional dimensions; (iv) existing tourism access and environmental infrastructure of SP is unable to cope with rapidly growing tourism or is constraining tourism growth; (v) Expected resettlement and environmental impacts

of SP development are minor (i.e. Category B or lower) as summarized in REAs; (vi) Key stakeholders, including local authorities and local communities endorse the sub project development; and (vii) the indicative cost estimate is at least \$3 million. An analysis of alternatives to the subprojects in Kampot and Kep further refined project selection, focusing on subproject siting and technologies. Figure 16 shows the alternate locations of the passenger pier in Kampot, and wastewater treatment in Kep.

Figure 16: Alternate Sites of Kampot Passenger Pier and Wastewater Treatment in Kep



A. Siting of Passenger Pier in Kampot

144. As discussed above, the coastal zone of Kampot province is a highly sensitive and valued ecosystem due to the extensive mangrove forests along the entire shoreline and the massive seagrass beds located in the nearshore Kampot bay. These comparatively pristine critical habitats support rare and endangered wildlife, and inshore and offshore fisheries.

145. The extensive examination of three alternative sites for the passenger pier facility concluded with the selection of the east bank of the Teuk Chuu River which would cause the least immediate environmental impact. The summary assessment is provided below.

Results of Alternate Pier Sites:

Phnom Dong Headland: Category A due extensive seagrass destruction: disqualified

West Bank of TeukChuu River: Category A due to extensive mangroves destruction, and adjacent Community Fishing Mangrove Restoration Project: disqualified

East Bank of Teuk Chuu River: Category B because no direct (impact footprint) damage to seagrass or mangroves, and set alongside existing boat channel: preferred location for pier.

1. Phnom Dong Headland

146. The extent and proximity of seagrass beds to the site as shown Figures 11 and 13 confirmed published studies that any form of pier/wharf/causeway development would occur on top of seagrass beds, moving the subproject to a Category A condition. Moreover, if a full EIA was conducted the site would be rejected due to investigation and validation of the following issues, along with assertions of the Director of the Fisheries Authority Kampot province.

1. The seagrass beds are used as feeding and spawning habitat for rare and endangered species such as the sea cow *Dugongdugonga* marine mammal, and green turtle *Cheloniemydas*
2. Cumulative impacts with the recent loss (before 2005) of 2,000 ha of seagrass in the intertidal zone on western edge of seagrass bed as a result of Vinh Hoi international port project west of Kampot;
3. Fisheries Authority, Agriculture, and Forestry Departments of Kampot were strongly against development here as indicated in a previous MOE EIA;
4. A seagrass conservation area has been established on east side of Teuk Chuu River channel with proposed conservation areas east to Phnom Dong site; and
5. The intrinsic and economic value of the seagrass beds to the inshore and offshore fisheries of Cambodia.
6. Seagrass and mangroves in Kampot bay generate USD \$1,500./ha/yr and USD \$1,200./ha/yr, respectively to the inshore and offshore fisheries of Cambodia.

147. Thus, the Phnom Dong headland site was excluded due to unavoidable extensive environmental and economic damage.

2. Teuk Chuu River

148. A Teuk Chuu River bank location close to the river mouth was preferred because there are no seagrass beds in the river, and no seagrass beds in the existing boat channel as a result of years of propeller scouring. The Director of the Fisheries Authority of Kampot also prefers the river location, and identified the following benefits of the location:

1. Possible channel dredging²⁵ would benefit: a) fisherman; and b) cargo transporters by allowing year-round and 24 hr access to their up-river moorings and ports;
2. Passenger pier would be good for tourism; and
3. Possible dredging will support Government policy on seasonal flood control by allowing flood waters from the upper basin to flush out of the river faster.

149. However, mangroves exist on both banks of the river, but with the east and west bank sites differing significantly in mangrove area and density. Because the Teuk Chuu River is near the large coastal seagrass bed development of a pier on either bank will require firm mitigations in the EMP such as:

1. All mangroves damaged or lost on riverbank will be replaced with local replanting as has been extensively done by AusAid at the mouth of the river;

²⁵ The subproject does not require dredging and will not dredge the river.

2. The planned expansion of demarcated (signed) conservation zones in the seagrass bed between the river and Phnom Dong continue; and
3. Boat size restrictions are applied to pier to not overload river ecosystem, though the river will likely limit boat draft size naturally.

a. West bank of Teuk Chuu River

150. This site will require an estimated 2.4 km of road new road construction to the estimated 4 ha site where the pier and facilities were proposed. An area of patchy and dense mangroves equivalent to the footprint of the road and pier facilities would need to be cleared. The location of the road, as indicated by DOT, during the site visit will be constructed alongside a community fishing mangrove restoration project. This site was rejected due expected mangrove destruction and proximity to a conservation area.

b. East bank of Teuk Chuu River

151. The second of two east bank sites were chosen because government land was available, and because no mangroves line the shoreline after being cut down before 2005. Scattered mangroves exist inland of the river. The site is also recommended by the Director of the local Fisheries Association

152. The no-project alternative would result in no active tourist development in the Kampot area. Tourism development would occur in Kampot but indirectly with the pace of other tourist areas in the province and coastal region.

B. Wastewater Treatment Technology for Crab Market

153. Three technologies and three sites for the treatment of wastewater from the crab market area were investigated.

1. Lagoon-based WWTP– East of Kep

154. The first technology was an aerated-lagoon based WWTP that would be located on salt flats east of the centre of Kep town close to the seashore (Figure 16). Wastewater would be collected from the crab market and piped to the WWTP. Treated effluent would be discharged to Kampot bay south of the WWTP.

155. This wastewater treatment solution was excluded because (i) there is not a reticulated water supply in Kep, (ii) the density of wastewater production in the area of the WWTP was too low, and (iii) because land transfer for the WWTP was going to be complex including compensation and resettlement.

2. Lagoon-based WWTP near Crab Market

156. A variant of the original plan was to develop a lagoon-based WWTP between the crab market and the string of beach front hotels and treat only wastewater from the hotels and crab market area. This plan was excluded due to the lack of available land for the WWTP because of the shoreline and road development plan of the municipality.

3. High Pressure Treatment Plant at Crab Market

157. The third option was to construct a Sequenced Batch Reactor WWTP and locate it on in-filled (reclaimed) shoreline beside the public washrooms next to the crab market. The technology was chosen because very little space was required, individual point sources could be linked to it, and the technology produced a high quality effluent which would be discharged below low tide mark without environmental damage. The alternative was discarded because of the need for in-filled shoreline which would have moved the subproject to a Category A condition,²⁶ and because of the relatively high expense, and low capacity of the local authorities to operate and maintain the facility.

4. ABR Septic System at Crab Market

158. The current plan for wastewater treatment in the crab market is to install an Anaerobic Baffled Reactor (ABR) septic tank and filtration field system to treat only waste from the crab market and adjacent restaurant stalls. Unlike the first three alternatives, the ABR system does not use an active wastewater treatment process.

159. Similar to the common septic tank-infiltration field systems used throughout the world, treatment of the liquid phase that overflows the ABR tank relies on the gallery or field infiltration bed to distribute the untreated liquid phase over a wide area to passively detoxify and become assimilated into the environment. Thus, the key attribute of the system is sufficient area and appropriate soils for complete passive waste assimilation with the environment.

160. As discussed above the potential issues with the ABR technology concerns sufficient available land in crab market area being available for the infiltration bed, and the need for the detoxifying waste in the infiltration bed not coming in contact with groundwater and local domestic wells. Thus, it is recommended that an analysis be conducted during the detailed design phase of soil type and depth in the crab market area, and available area for the infiltration bed in relation to the expected volume of wastewater that will be produced by the crab market and adjacent restaurant stalls.

161. The no-project alternative would result in continued worsening of pollution problems at the crab market area as a result of inadequate solid and domestic waste management, which would lead to increased health problems of the local population and tourists, and the long term, a decrease in tourism activity at the site.

VIII. INFORMATION DISCLOSURE AND GRIEVANCE REDRESS MECHANISM

162. As indicated above the subproject components were introduced to stakeholders during project preparation, including verbal and visual presentations of all subprojects elements.

163. The IEE must be easily available to the stakeholders contacted during project preparation, in written and verbal forms, and in local language. At a minimum the Executive Summary of the IEE should be translated to Khmer and distributed to all APs. The IEE should

²⁶ Coastal zone infilling (reclamation) normally is a Category A condition because of the unknown aquatic resources that will be destroyed at the in filled area, and uncertainty of the quality of the fill, and potential contamination of nearshore area.

be available on the MOT and DOT web sites, at DOT offices, district offices, and subproject sites. Similarly, all project reporting with specific reference to stakeholder consultation minutes, environmental monitoring, and reports on EMP implementation released by the EA/PCU should be available at the same offices and web sites. The IEE will also be available on the ADB web site. And after implementation of subprojects begins, all environmental and EMP reporting submitted by the EA/PCU will also be available on the project and ADB web site.

164. A well-defined grievance redress and resolution mechanism will be established to address all affected stakeholders lodge grievances and complaints regarding environment, land acquisition, and compensation and resettlement, in a timely and satisfactory manner. All stakeholders will be made fully aware of their rights, and the detailed procedures for filing grievances and an appeal process will be published through an effective public information campaign. The grievance redress mechanism and appeal procedures will also be explained in a project information booklet (PIB) that will be distributed to all stakeholders.

165. APs are entitled to lodge complaints regarding any perceived issue with the affected environment, or aspect of the land acquisition and resettlement requirements such as entitlements, rates and payment and procedures for resettlement and income restoration programs. APs complaints can be made verbally or in written form. In the case of verbal complaints, the committee on grievance will be responsible to make a written record during the first meeting with the APs.

166. A Grievance Committee that has experience with environmental and social issues will be organized in local communes, comprising local leaders designated for such tasks. The designated commune officials shall exercise all efforts to settle issues at the commune level through appropriate community consultation. All meetings shall be recorded by the Grievance Committee and copies of meeting minutes shall be provided to affected persons. A copy of the minutes of meetings and actions undertaken shall also be provided to the DOT, PIU, and ADB upon request.

167. The procedures for environmental and social grievance redress are set out below. The procedure described below is consistent with the legal process for resolution of disputes in Cambodia.

- i) Stage 1: Complaints from APs for the first time shall be lodged verbally or in written form with the village head or commune leader. The complaints shall be discussed with the APs and the designated Head of Grievance Committee or members of the committee. Because initial environmental issues will most likely be construction-related the Environment Officer/contractor and Safeguards Specialist/PIU need to be notified immediately. It will be the responsibility of the Head of Grievance Committee to resolve the issue within 15 days from the date the complaint is received. All meetings shall be recorded and copies of the minutes of meetings will be provided to APs.
- ii) Stage 2: If no understanding or amicable solution can be reached or if no response is received from the Grievance Committee within 15 days from filing the complaint, the APs can elevate the case to the District Grievance Committee. The District Grievance Committee is expected to respond within 15 days upon receiving the APs appeal.
- iii) Stage 3: If the AP is not satisfied with the decision of the District Office, or in the absence of any response, the APs can appeal to the Provincial Grievance Committee (PGC). The PGC will review and issue a decision on the appeal within 30 days from the day the complaint is received.

- iv) Stage 4: If the AP is still not satisfied with the decision of the PGC or in the absence of any response within the stipulated time, the APs, as a last resort may submit his/her case to the provincial court. The court will address the appeal by written decision and submit copies to the respective entities which include the DOT, DGC/PGC and the APs. If however, the AP is still not satisfied the court's decision, the case may be elevated to the provincial court. If however, the decision of the provincial court is still unsatisfactory to the APs, the APs may bring the complaints to the Higher Court.

168. The PCU will be responsible for checking the procedures and resolutions of grievances and complaints. The sustainability and monitoring coordination unit of the PCU must have expertise and experience in social and environmental issues associated with infrastructure developments. The PCU may recommend further measures to be taken to redress unresolved grievances. The environmental specialists of the DDSC will provide the necessary training to improve grievance procedures and strategy for the grievance committee members when required.

169. The executing agency will shoulder all administrative and legal fees that will be incurred in the resolution of grievances and complaints if the APs win their case. Other costs incurred by legitimate complaints will also be refunded by the project if the APs win their case.

170. In cases where APs do not have the writing skills or are unable to express their grievances verbally, APs are encouraged to seek assistance from the recognized local groups, NGOs, other family members, village heads, or community chiefs to have their grievances recorded in writing and to have access other documentation, and to any survey or valuation of assets, to ensure that where disputes do occur, all the details have been recorded accurately enabling all parties to be treated fairly. Throughout the grievance redress process, the responsible committee will ensure that the concerned APs are provided with copies of complaints and decisions or resolutions reached.

171. If efforts to resolve disputes using the grievance procedures remain unresolved or are unsatisfactory, APs have the right to directly discuss their concerns or problems with ADB's Southeast Asia Department through the ADB Cambodia Resident Mission (CARM). If APs are still not satisfied with the responses of CARM and the Southeast Asia Department, they can directly contact the ADB Office of the Special Project Facilitator (OSPF).

IX. ENVIRONMENTAL MANAGEMENT PLANS

172. Environmental management plans for the subprojects in Kampot province and Kep province have been developed, and are found under separate cover.

X. CONCLUSIONS AND RECOMMENDATION

173. The examination of the subprojects of the project in Cambodia indicates that potential environmental impacts are largely restricted to the construction phase of the subproject components. The construction-related disturbance and impacts of elevated dust, noise, traffic disruptions, erosion and sedimentation, disrupted commercial and community activities, and public and worker safety can be managed and mitigated effectively with standard construction practices (e.g., IFC/World Bank 2007).

174. The stakeholder meetings and household and village level interviews underscored the need for effective management of noise, dust, traffic disruptions, and safety during the construction phase of the project. Follow-up meetings with the consulted stakeholders to address any construction-related issues are required.

175. However, potential significant impacts of the operation of the passenger pier in Kampot on the coastal resources and critical habitat could occur immediately and over time. The most sensitive critical habitats are the offshore seagrass beds and adjacent mangrove forests. Mitigations of potential environmental impacts of the pier in operation must be strictly followed. It is strongly recommended that a formal navigation management plan be developed for all boat traffic in the Teuk Chuu River and nearshore Kampot bay.

176. A potentially significant issue with the operation ABR septic system at the crab market in Kep is the immediate and long-term sustainability of the waste treatment technology due to the requirements for sufficient land area for the passive treatment of the liquid phase through the infiltration gallery bed. Should the infiltration gallery bed become too small then unassimilated wastewater could leak laterally to the shoreline thereby degrading coastal water quality, or into groundwater and local domestic wells.

177. The detailed design phase of the subproject must carefully assess the land area requirements for the infiltration phase of the ABR system in view of local soil type and depth, and wastewater volumes to be treated.

178. In parallel with preparation of the detailed designs a select re-review of the existence and sensitivity of valued coastal ecological and cultural resources including groundwater is needed to clarify potential impacts of the detailed designs. It is recommended that as part of the update of the EMPs at the detailed design stage, that supplementary data/information be reviewed. A local groundwater and soils investigation at the Kep market is required

179. The IEE concludes that the description of the feasibility design of the project combined with available information on the affected environment is sufficient to identify the scope of potential environmental impacts of the project. Providing that significant changes do not occur to the design of one or more of the project components, and that the supplementary sensitive receptor data, and final design information identified above is provided, that further detailed environmental impact assessment (EIA) of the project is not required. The IEE and EMPs will be updated and finalized at the detailed design stage which will be sent to MOE for assessment and approval.

180. The separate EMPs developed for the provincial subprojects provide impact mitigation plans, environmental monitoring plans, and specify the institutional responsibilities and capacity needs for the environmental management of the subprojects. The IEE recommends that the EMPs be reviewed and updated at the detailed design phase to ensure that they address fully the final project designs, and all potential environmental impacts of the subprojects.

XI. REFERENCES CITED

- ADB.2009. Safeguard Policy Statement, ADB Policy Paper.
ADB. 2003. Environmental Assessment Guidelines of the Asian Development Bank.
Kingdom of Cambodia.1999. Sub decree on Water Pollution Control, N0. 27, ANkr-BK.
Kingdom of Cambodia. Sub decree on Solid Waste Management, No. 36 ANKr-BK.

IUCN 2011.IUCN Red List of Threatened Species. Version 2011.1.<www.iucnredlist.org>.
Downloaded on 01 November 2011.
World Bank Group, 2007. Environmental, Health, and Safety Guidelines. Washington DC.

Draft

APPENDIX A. ENVIRONMENTAL STANDARDS FOR CAMBODIA

From Government Sub-decree on Water Pollution Control (1999)

Annex 2
Effluent standard for pollution sources
discharging wastewater to public water areas or sewer

N ^o	Parameters	Unit	Allowable limits for pollutant substance discharging to	
			Protected public water area	Public water area and sewer
1	Temperature	^o C	< 45	< 45
2	pH		6 – 9	5 - 9
3	BOD ₅ (5 days at 200 C)	mg/l	< 30	< 80
4	COD	mg/l	< 50	< 100
5	Total Suspended Solids	mg/l	< 50	< 80
6	Total Dissolved Solids	mg/l	< 1000	< 2000
7	Grease and Oil	mg/l	< 5.0	< 15
8	Detergents	mg/l	< 5.0	< 15
9	Phenols	mg/l	< 0.1	< 1.2
10	Nitrate (NO ₃)	mg/l	< 10	< 20
11	Chlorine (free)	mg/l	< 1.0	< 2.0
12	Chloride (ion)	mg/l	< 500	< 700
13	Sulphate (as SO ₄)	mg/l	< 300	< 500
14	Sulphide (as Sulphur)	mg/l	< 0.2	< 1.0
15	Phosphate (PO ₄)	mg/l	< 3.0	< 6.0
16	Cyanide (CN)	mg/l	< 0.2	< 1.5
17	Barium (Ba)	mg/l	< 4.0	< 7.0
18	Arsenic (As)	mg/l	< 0.10	< 1.0
19	Tin (Sn)	mg/l	< 2.0	< 8.0

20	Iron (Fe)	mg/l	< 1.0	< 20
21	Boron (B)	mg/l	< 1.0	< 5.0
22	Manganese (Mn)	mg/l	< 1.0	< 5.0
23	Cadmium (Cd)	mg/l	< 0.1	< 0.5
24	Chromium (Cr) ⁺³	mg/l	< 0.2	< 1.0
25	Chromium (Cr) ⁺⁶	mg/l	< 0.05	< 0.5
26	Copper (Cu)	mg/l	< 0.2	< 1.0
27	Lead (Pb)	mg/l	< 0.1	< 1.0
28	Mercury (Hg)	mg/l	< 0.002	< 0.05
29	Nickel (Ni)	mg/l	< 0.2	< 1.0
30	Selenium (Se)	mg/l	< 0.05	< 0.5
31	Silver (Ag)	mg/l	< 0.1	< 0.5
32	Zinc (Zn)	mg/l	< 1.0	< 3.0
33	Molybdenum (Mo)	mg/l	< 0.1	< 1.0
34	Ammonia (NH ₃)	mg/l	< 5.0	< 7.0
35	DO	mg/l	>2.0	>1.0
36	Polychlorinated Byphemyl	mg/l	<0.003	<0.003
37	Calcium	mg/l	<150	<200
38	Magnesium	mg/l	<150	<200
39	Carbon tetrachloride	mg/l	<3	<3
40	Hexachloro benzene	mg/l	<2	<2
41	DTT	mg/l	<1.3	<1.3
42	Endrin	mg/l	<0.01	<0.01
43	Dieldrin	mg/l	<0.01	<0.01
44	Aldrin	mg/l	<0.01	<0.01
45	Isodrin	mg/l	<0.01	<0.01
46	Perchloro ethylene	mg/l	<2.5	<2.5
47	Hexachloro butadiene	mg/l	<3	<3
48	Chloroform	mg/l	<1	<1
49	1,2 Dichloro ethylene	mg/l	<2.5	<2.5

Annex 4
Water Quality Standard in public water areas
for bio-diversity conservation

1- River

No	Parameter	Unit	Standard Value
1	pH	mg/l	6.5 – 8.5
2	BOD ₅	mg/l	1 – 10
3	Suspended Solid	mg/l	25 – 100
4	Dissolved Oxygen	mg/l	2.0 - 7.5
5	Coliform	MPN/100ml	< 5000

2- Lakes and Reservoirs

No	Parameter	Unit	Standard Value
1	pH	mg/l	6.5 – 8.5
2	COD	mg/l	1 – 8
3	Suspended Solid	mg/l	1 – 15
4	Dissolved Oxygen	mg/l	2.0 - 7.5
5	Coliform	MPN/100ml	< 1000
6	Total Nitrogen	mg/l	1.0 – 0.6
7	Total Phosphorus	mg/l	0.005 – 0.05

3- Coastal water

No	Parameter	Unit	Standard Value
1	pH	mg/l	7.0 – 8.3
2	COD	mg/l	2 – 8
4	Dissolved Oxygen	mg/l	2 - 7.5
5	Coliform	MPN/100ml	< 1000
5	Oil content	mg/l	0
6	Total Nitrogen	mg/l	1– 1.0
7	Total Phosphorus	mg/l	0.02 – 0.09

Annex 5

Water Quality Standard in public water areas for public health protection

No	Parameter	Unit	Standard Value
1	Carbon tetrachloride	µg/l	< 12
2	Hexachloro-benzene	µg/l	< 0.03
3	DDT	µg/l	< 10
4	Endrin	µg/l	< 0.01
5	Dieldrin	µg/l	< 0.01
6	Aldrin	µg/l	< 0.005
7	Isodrin	µg/l	< 0.005
8	Perchloroethylene	µg/l	< 10
9	Hexachlorobutadiene	µg/l	< 0.1
10	Chloroform	µg/l	< 12
11	1,2 Trichloroethylene	µg/l	< 10
12	Trichloroethylene	µg/l	< 10
13	Trichlorobenzene	µg/l	< 0.4
14	Hexachloroethylene	µg/l	< 0.05
15	Benzene	µg/l	< 10
16	Tetrachloroethylene	µg/l	< 10
17	Cadmium	µg/l	< 1
18	Total mercury	µg/l	< 0.5
19	Organic mercury	µg/l	0
20	Lead	µg/l	< 10
21	Chromium, valent 6	µg/l	< 50
22	Arsenic	µg/l	< 10
23	Selenium	µg/l	< 10
24	Polychlorobiohenyl	µg/l	0
25	Cyanide	µg/l	< 0.005

APPENDIX B: MANGROVE RESTORATION WITH CWDC CAMBODIA

Minutes of Meeting with Children and Women Development Centre (CWDC) Cambodia

Kampot, Cambodia

November 15, 2013

Participants:

Mr. PhouTeng, Vice Director, CWDC
Mr. Steven Schipani, ADB
Mr. Ricky Barba, ADB
Dr. J. Don Meisner, GHD

Purpose of Meeting:

Introduce Mr. Teng to the project and Kampot Pier subproject and obtain his input on how to manage issues with mangroves based on his recent article²⁷ (12/11/13) on status of mangrove forests in Cambodia in the Phnom Penh Post

- SS introduced subprojects in Kampot and Kep with special reference to the passenger pier development in Kampot
- Mr. Teng followed with an overview of the mission and activities of the CWDC:
 - mission of CWDC is to establish a natural right of the community, vis-à-vis children and women, to conserve and to manage the marine resources of Cambodia with a special focus on mangroves and inshore fisheries; and
 - activity areas of CWDC include: 1) education and awareness-raising of community; 2) development of rights of children and women's food security; and 3) conservation of natural resources.
- The development of the right to food security is occurring with the following activities:
 - creation of community-based fisheries;
 - mangrove protection and restoration, and
 - seagrass protection and conservation.
- CWDC through small ecotourism-based projects CWDC is promoting the importance of coastal resources all along coastline of Cambodia with the following example activities:
 - Kayaking through mangroves forests and seagrass beds
 - night fishing, and
 - awareness raising and capacity development
- CWDC is developing artificial reefs and habitat for inshore fish populations with spent concrete structures
- CWDC is also helping develop small –enterprises, for example community fish trading with fisherman, selling fish to or at local markets.
- CWDC is replanting mangroves along coastline using community-based mangrove nurseries. They get small financial support from different sources
- Mr. Teng was interested the pier development, and most importantly, that we plan to create a mangrove interpretive demonstration on site to create awareness of mangroves for tourists using the passenger pier.

²⁷ Phnom Penh Post November 12, 2013

- SS confirmed that the ADB project will seek to engage CWDC to contribute to the demonstration, but more importantly, to CWDC's ongoing mangrove restoration and small enterprise support work along the Cambodian coast.

Draft